



# State of the County 2018

*November 28, 2018*



Dr. Theresa Daniel



Mike Cantrell



Clay Lewis Jenkins



John Wiley Price



Dr. Elba Garcia

# Forbes May 2018: Dallas is #1 for Jobs Two Years in a Row!

- “Big D’s domination is all the more secure because of the diverse sources of its job growth.”



- ▶ “Key to Dallas’ success: It’s a great value proposition, with affordable housing, a favorable regulatory climate, low taxes and an increasing array of cultural amenities beyond the Dallas Cowboys.”

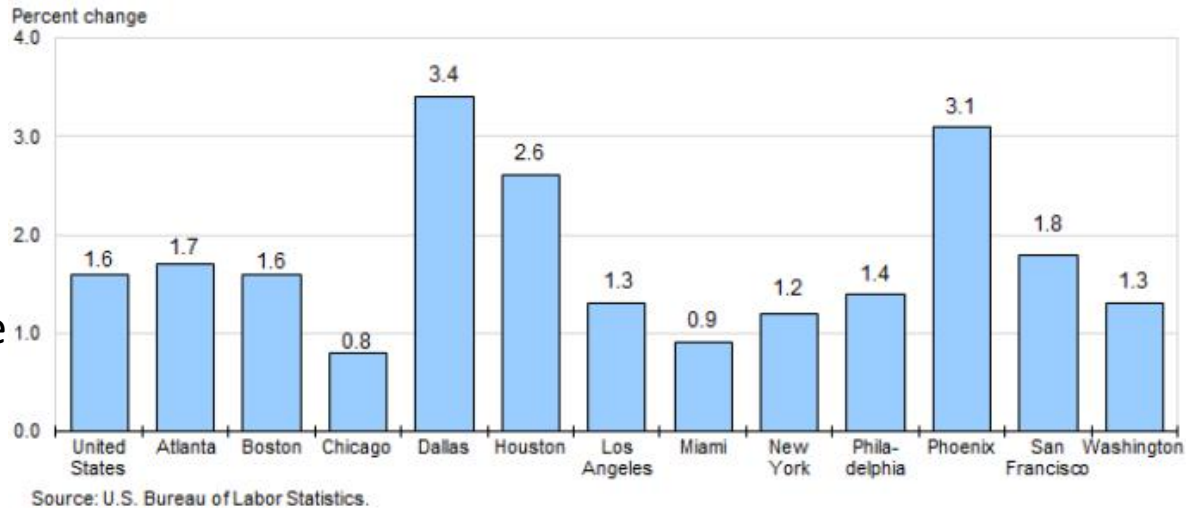
Source: Forbes, “The Best Cities for Jobs 2018: Dallas and Austin Lead the Surging South,” May 2018



# Job Creation

- Dallas employment grew 3.4% in the last year – the fastest in the nation.
  - National increase 1.6%
- Total DFW employment 3.7 million
- Dallas added the most jobs in the nation last year with 122k
- Ranked 1<sup>st</sup> in job growth

Chart 3. Total nonfarm employment, over-the-year percent change, United States and 12 largest metropolitan areas, May 2018



# It's not a job fair... It's a job hookup

## Hiring Harvey: Welcome to Dallas

- Evacuees from the gulf wanting to stay
- 275 job seekers
- 66% hire rate

## Judge Clay Jenkins' You're Hired! Job Fest

- Seasonal and logistics need
- UPS, Fed Ex, Amazon, etc.
- 4k jobs available; thousands hired!
- Most ever preregistered for job fair
- 3500 job seekers

## Hiring Red, White and You

- Over 180 employers
- More than 10k jobs available
- 40% hire rate





# Dallas County Transportation Projects

## IH 635 East Phase 3:

- #1 Priority in DFW region; \$1.6B project
- Reached compromise with state leaders
- Hopefully approved at TTC later this month
- Adds 2 general purposes lanes, full frontage roads, IH 30 interchange & Skillman/Audelia redo

## Southern Gateway:

- \$666M project
- Broke ground earlier this year, estimated completion 2021
- Adds 2 general purpose lanes, 2 reversible non-tolled express lanes, full frontage roads



# Southern Dallas County

## Economic Growth

Dallas County inland port area continues to lead DFW in industrial growth and DFW is #1 in the US.

New companies in the Inland Port

- Biagi, 400k sq. ft. International beer distributor
- KTN, 500k sq. ft in construction,
- Amazon, 1.5 million sq. ft
- Discount Tire, 750,000 sq. ft
- Shippers Logistics, 500,000 sq. ft



Source: Stream Realty



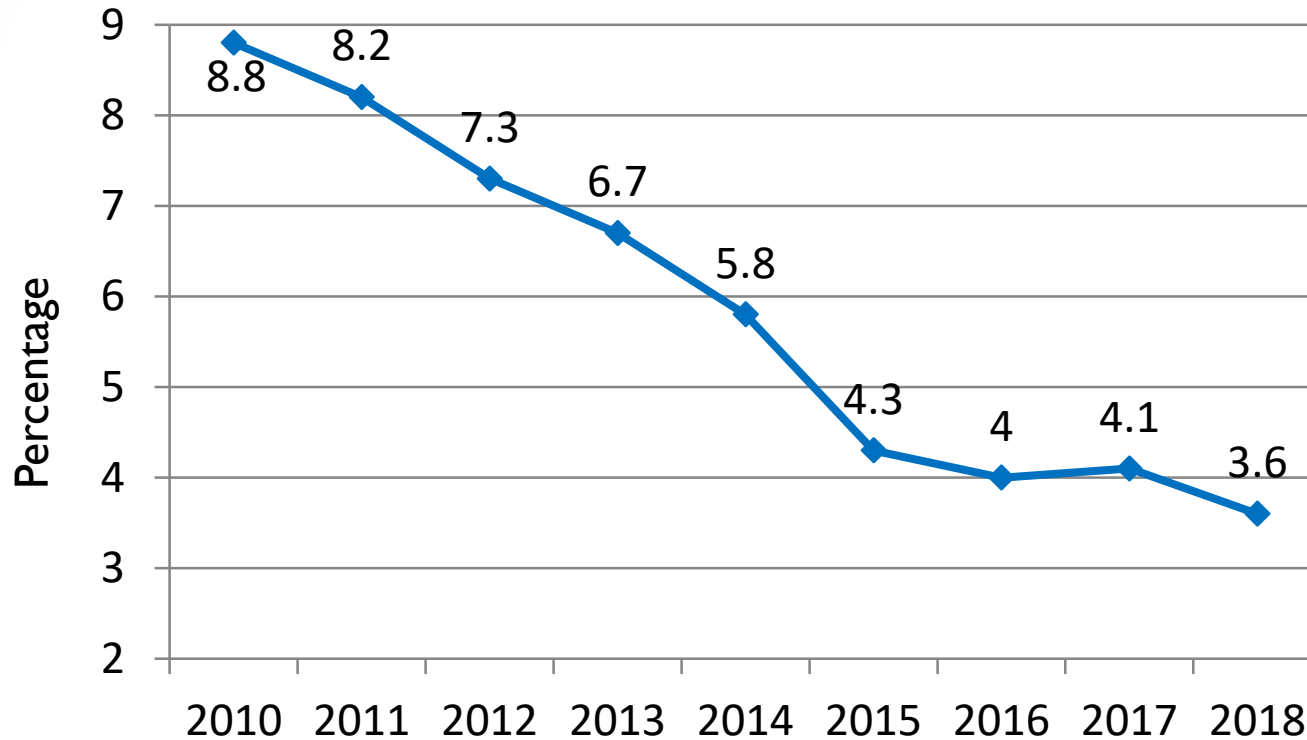
# Dallas County Workforce

Population (est):	2,600,000
Civilian Labor Force:	1,383,958
Employed:	1,337,461
Unemployed:	46,497
Unemployment rate:	3.4%
Continued unemployment claims:	8,832 (-1,022 over the year)
Average weekly wage:	\$1,425 (1 <sup>st</sup> qtr. 2018)
Employers:	75,019
Median Age:	33.3
Median Household Income:	\$51,411
Poverty rate (all):	18.6%
Poverty rate (under 18):	28.3%

Sources: October 2018, Dallas County, Texas Workforce Commission – Workforce Data Library; ACS Table DP03, 2016



# Unemployment



Source: Bureau of Labor Statistics, "Local Area Unemployment Statistics Map," September 2018.





**Economic Opportunity**  
is the goal of ensuring  
policies and practices that  
give all persons an equal  
chance for economic security

Source: Dallas Economic Opportunity Assessment, CPPP, April 2018



Economic  
Security

Environment  
for Economic  
Opportunity



Source: Dallas Economic Opportunity Assessment, CPPP, April 2018



# Economic Security

Income  
Education  
Debt & Assets  
Health  
Safety

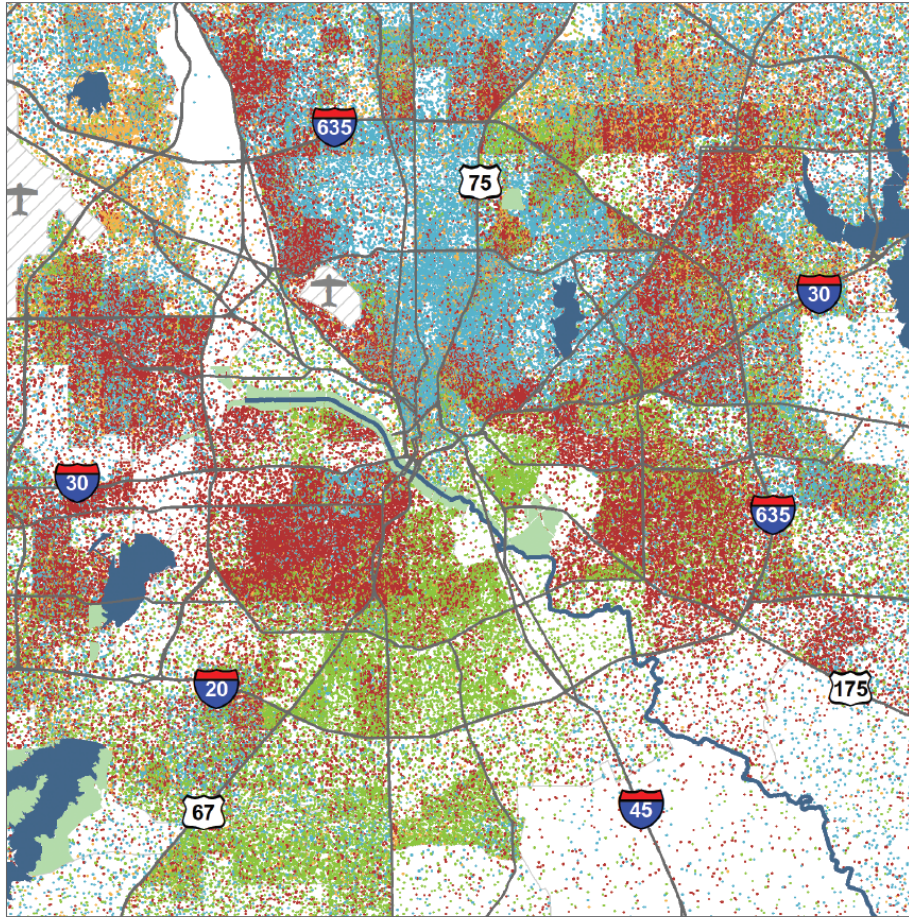


Source: Dallas Economic Opportunity Assessment, CPPP, April 2018





# Dallas County is Geographically Segregated by Race and Ethnicity



1 DOT = 10 PERSONS

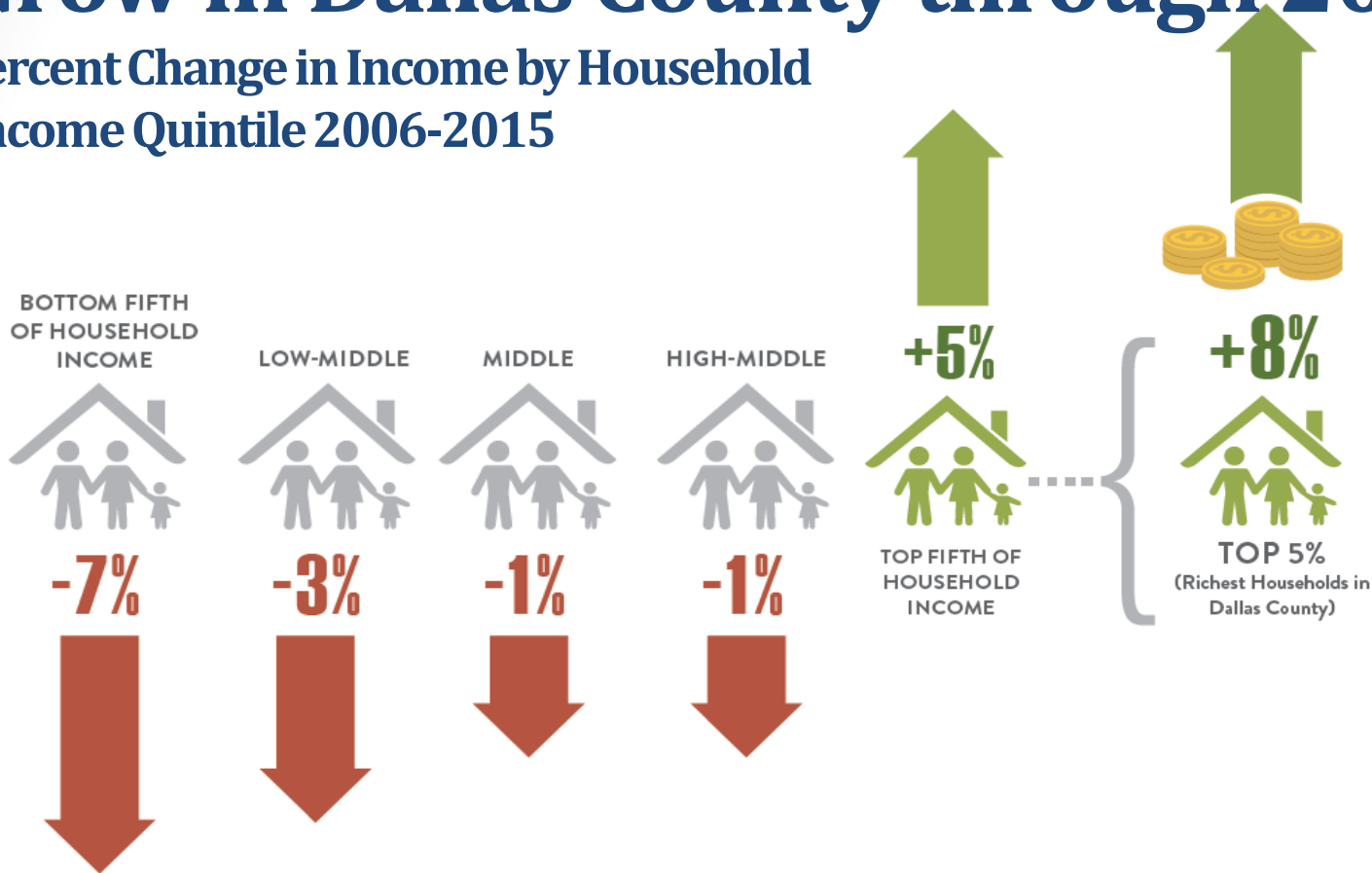
- BLACK
- HISPANIC
- WHITE
- OTHER

Source: Dallas Economic Opportunity Assessment, CPPP, April 2018



# Income Polarization Continued to Grow in Dallas County through 2015

## Percent Change in Income by Household Income Quintile 2006-2015



Source: Dallas Economic Opportunity Assessment, CPPP, April 2018





# Dallas County Income Disparities by Race

1 Dollar  
White Workers



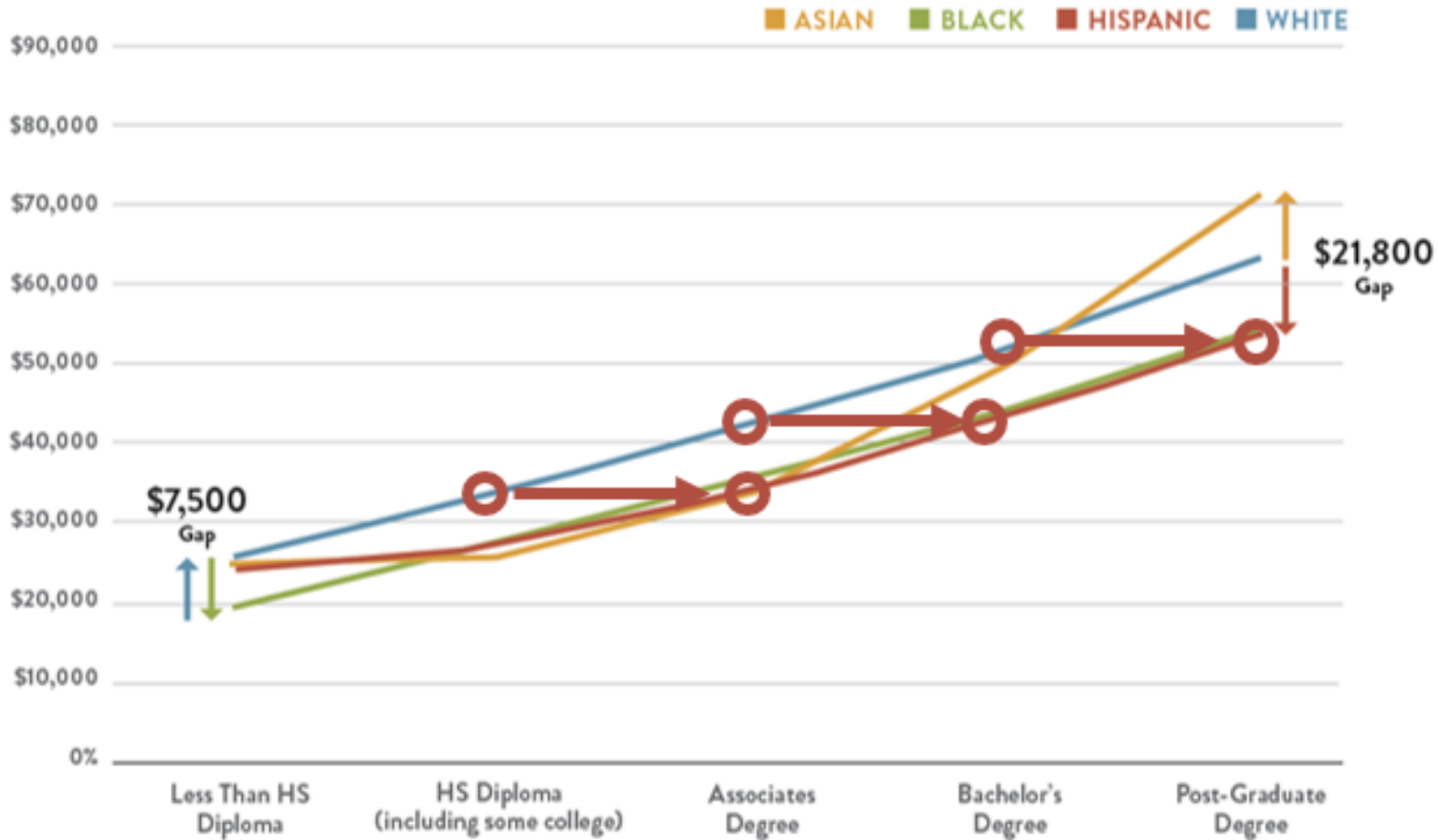
54  
Cents  
Black Workers

58  
Cents  
Hispanic  
Workers

Source: Dallas Economic Opportunity Assessment, CPPP, April 2018



# Racial Gaps in Income



Source: Source: CPPP "Dallas Economic Opportunity Assessment"; CPPP Analysis of United States Census Bureau, 2011-2015 5-year American Community Survey PUMS Data44



**Property taxes assessments  
are rising like never before:  
nearly 40% over the past 4  
years.**

**Why doesn't government  
lower their rate?**



# My Proposal to Reduce Tax Rates

- As I have done the past several years, I'm asking each taxing entity, except schools, to **consider lowering their respective tax rate to the effective rate**. The effective rate is that rate which would allow the average taxpayer to pay the same amount as they did last year.
- The full rate, without reductions, would generate an increase of \$44.126 million
- The projected effective rate would lower the rate from 24.31 cents to 23.01 cents per \$100 valuation, and would bring in \$13.8 million in additional revenue based on \$6 billion of New Construction last year.



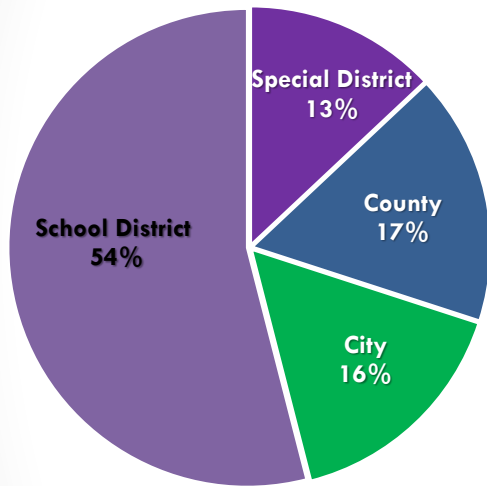
# My Proposal to Reduce Tax Rates

- The adult inmate population in our jail was 4,719 last month – yet the Sheriff’s Office is staffed for 6,296 inmates.
- If we reduce our inmate population to 4,500, on average, Dallas County could depopulate the Kays Jail tower, which would leave 5,104 bunks in the system and save tax payers **\$20 million a year.**
- Additional moneys could be found through efficiencies to close the gap between the savings from closing the jail tower and the new construction to reach the same budget as the full tax rate.
- I hope to work with my colleagues on the Commissioners Court and other partner jurisdictions to provide meaningful tax relief.
- If we aren’t careful, we will price the middle class out of living here and in doing so foul the very engine that made us #1.



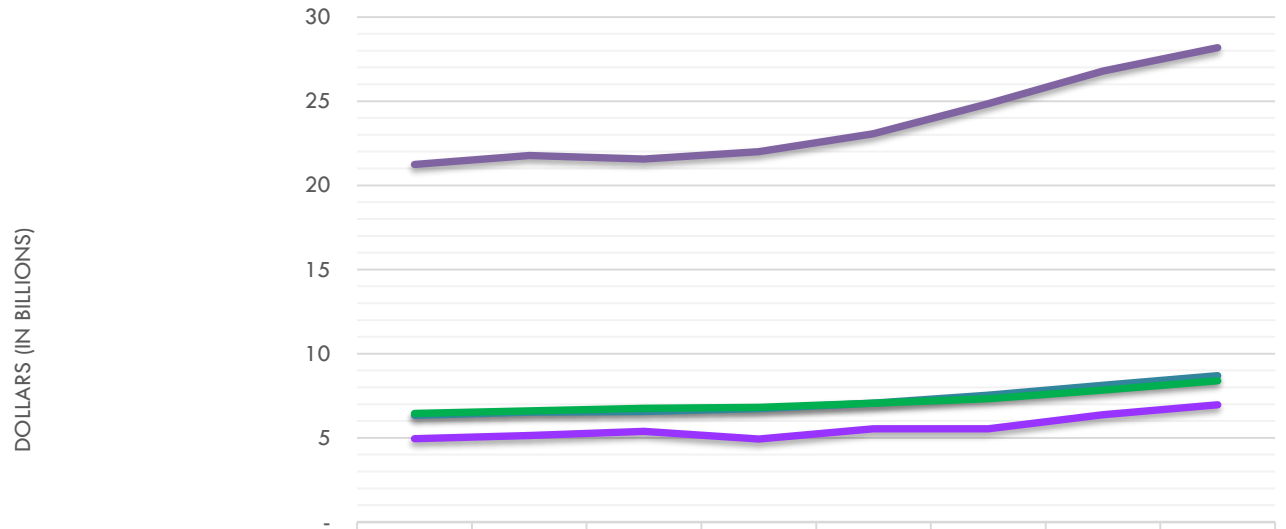


# The Majority of Property Taxes Fund Public Schools



Source: Texas Comptroller of Public Accounts, 2015 property Tax Levies

## Growth of the Property Tax by Taxing Unit Type



	2008	2009	2010	2011	2012	2013	2014	2015
Special Purpose District Levy	4,952,734	5,133,820	5,392,511	4,926,074	5,543,422	5,529,434	6,370,469	6,954,137
County Levy	6,342,704	6,526,724	6,567,069	6,742,912	7,064,659	7,537,749	8,114,998	8,696,387
City Levy	6,451,012	6,593,755	6,755,401	6,810,049	7,054,989	7,324,430	7,828,571	8,380,435
School Levy	21,233,517	21,780,056	21,558,289	22,001,561	23,072,781	24,854,671	26,792,677	28,176,465



The Texas  
Legislature's  
method of funding  
schools and its  
passage of unfunded  
mandates increases  
the property tax  
burden on local  
taxpayers.

Public schools are funded through:

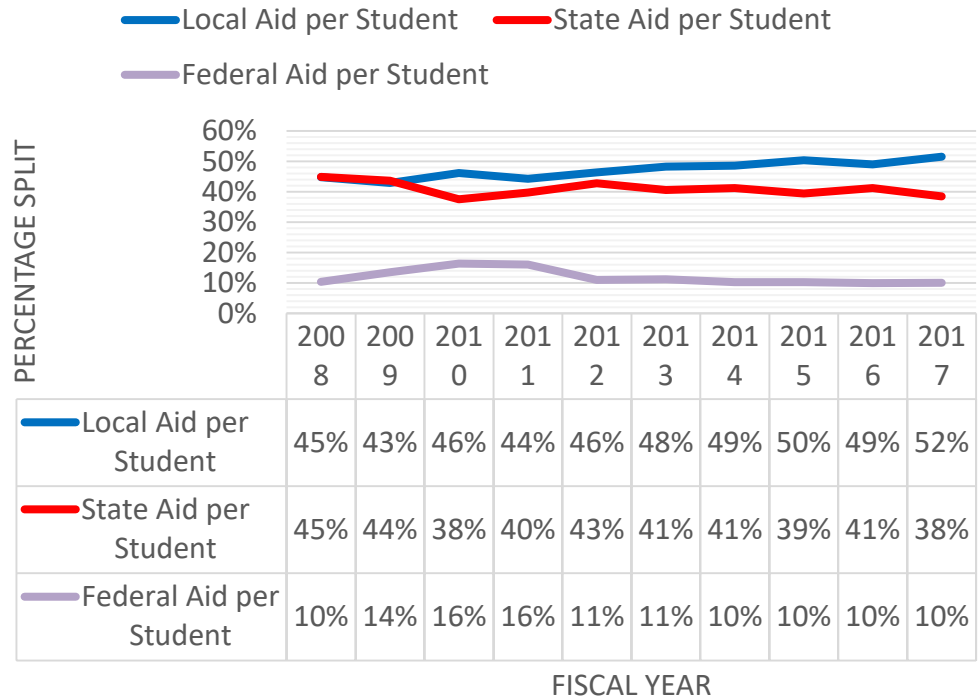
- State General Revenue Fund
- Local Property Taxes
- Federal Funds



Higher school taxes because of property value growth benefit the State's general revenue fund, not school districts.

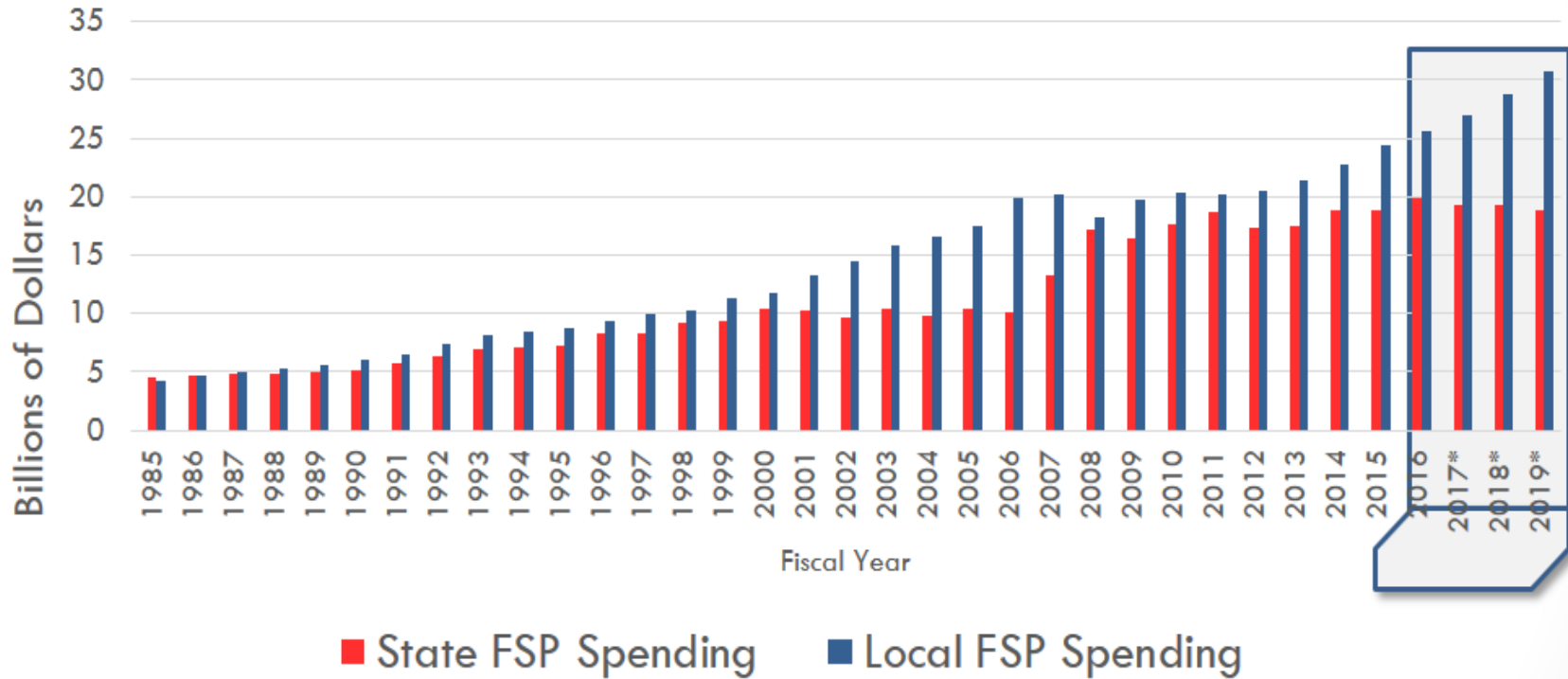
- School districts are held to a certain amount of funding per pupil. When property tax revenue increases due to rising property values, the State does not increase per-pupil funding. Instead, the State lowers its percentage of total school funding.

## Student Funding



# Foundation School Program: The State Share is Falling

## History 1985-2016 (2017-2019 estimated by LBB)



\*Data for FY17-FY19 are estimated

Source: Direct from LBB, General Appropriations Act, Texas Education Agency



Had the State increased its share to be a 50/50 partner in funding schools for 2016 – 2019, local school property taxes could have been reduced by more than \$17 billion – an average of 15% each year.

Since 2015, the Texas Legislature increased school funding from **local property taxes**

**\$14.35 Billion**

while **state funding** increased

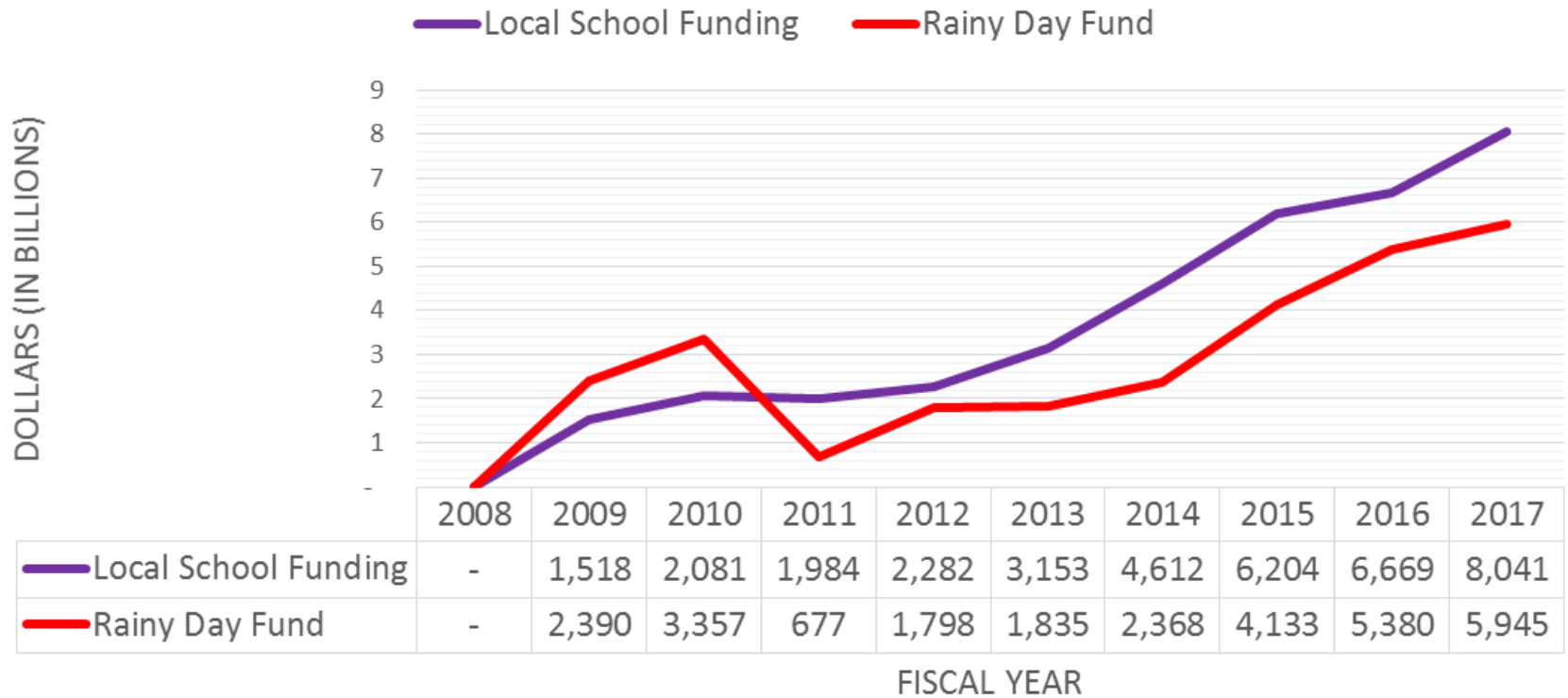
**\$2.17 Billion**

Source: Legislative Budget Board





# Cumulative Change in Rainy Day Fund vs. Local School Financing



# General Appropriations Act FY18-19

The legislature reduced the State's share of public education funding.

The budget that the legislature passed counts on over **14% increase in local property taxes over the FY '18-'19 tax years.**



# General Appropriations Act FY18-19

## GENERAL APPROPRIATIONS ACT FOR THE 2018-19 BIENNIUM

Eighty-fifth Texas Legislature  
Regular Session, 2017

Text of Conference Committee Report on Senate Bill  
and other bills affecting 2018-19 general appropriations



Editor's Note: Senate Bill No. 1 Conference Committee Report (85th Legislature, Regular Session) appropriation figures have adjusted in this publication to incorporate certain Article 31 (6) Provisions appropriations into relevant agency bill actions legislator enacted by the 85th Legislature, including those of a Certain Section, which affect appropriations, non-discretionary corrections and/or recording adjustments, and the Governor's Conferring changes to agency rules and informational issues have been made. Complete copies of legislation affecting Senate Bill No. 10 found at [www.capitol.texas.gov](http://www.capitol.texas.gov).

[www.lbb.state.tx.us](http://www.lbb.state.tx.us)

3. **Foundation School Program Funding.**<sup>10</sup> Out of the funds appropriated above, a total of \$21,468,235,602 in fiscal year 2018 and \$21,503,735,602 in fiscal year 2019 shall represent the sum-certain appropriation to the Foundation School Program. The total appropriation may not exceed the sum-certain amount. This appropriation includes allocations under Chapters 41, 42 and 46 of the Texas Education Code.

Formula Funding: The Commissioner shall make allocations to local school districts under Chapters 41, 42 and 46 based on the March 2017 estimates of average daily attendance and local district tax rates as determined by the Legislative Budget Board and the final tax year 2016 property values. Property values, and the estimates of local tax collections on which they are based, shall be increased by 7.04 percent for tax year 2017 and by 6.77 percent for tax year 2018.



# Unfunded Mandate



An unfunded mandate is a state law or regulation that requires a local government to perform certain actions, with no money provided for fulfilling the requirements.

Local governments, and property taxpayers by extension, face billions of dollars of unfunded and underfunded mandates from both the federal and state governments.



# Solutions

---

The State should be a 50/50 partner in funding the operation and maintenance of our schools.

---

The Texas Legislature should pass a constitutional amendment to stop unfunded mandates.

---

The State should reimburse counties for holding state inmates in county jails, and should fully fund indigent defense costs.

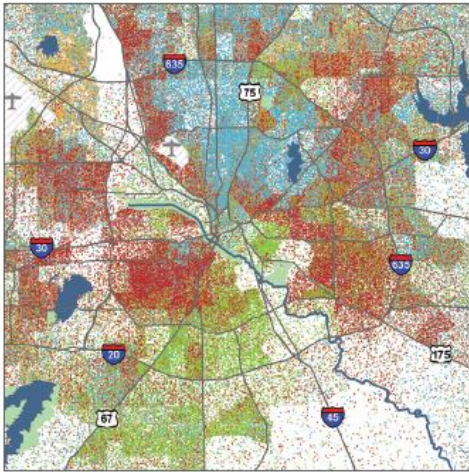
---

Leave local decisions to local communities and their elected officials.



# Race, Education, Income & Place

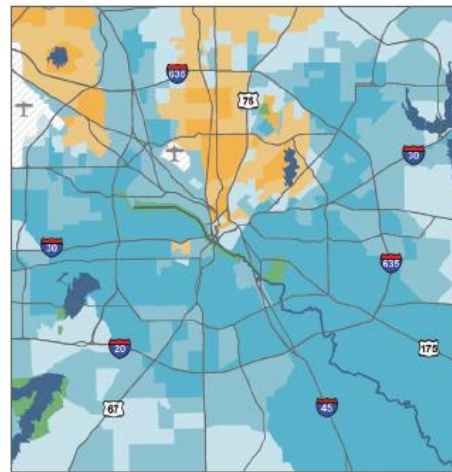
Population Density  
by Race and Ethnicity



1 DOT = 10 PERSONS

- BLACK
- HISPANIC
- WHITE
- OTHER

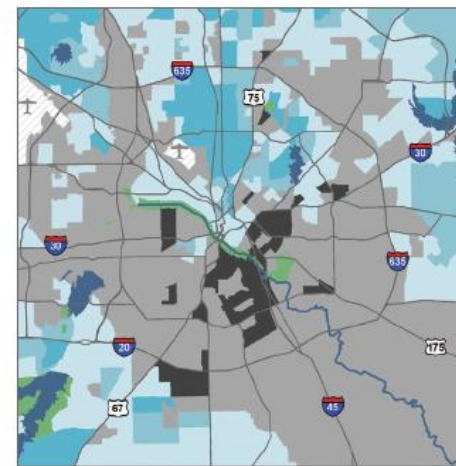
Share of Adults with  
a College Degree



PERCENT OF ADULTS AGES 25+ WITH AN  
ASSOCIATES DEGREE OR HIGHER LEVEL  
OF EDUCATION

- Less than 20%
- 20% to 39.9%
- 40% to 59.9%
- 60% to 79.9%
- 80% or more

Median Household Income



MEDIAN HOUSEHOLD INCOME

- Less than \$25,000
- \$25,000 to \$49,999
- \$50,000 to \$74,999
- \$75,000 to \$99,999
- \$100,000 or more

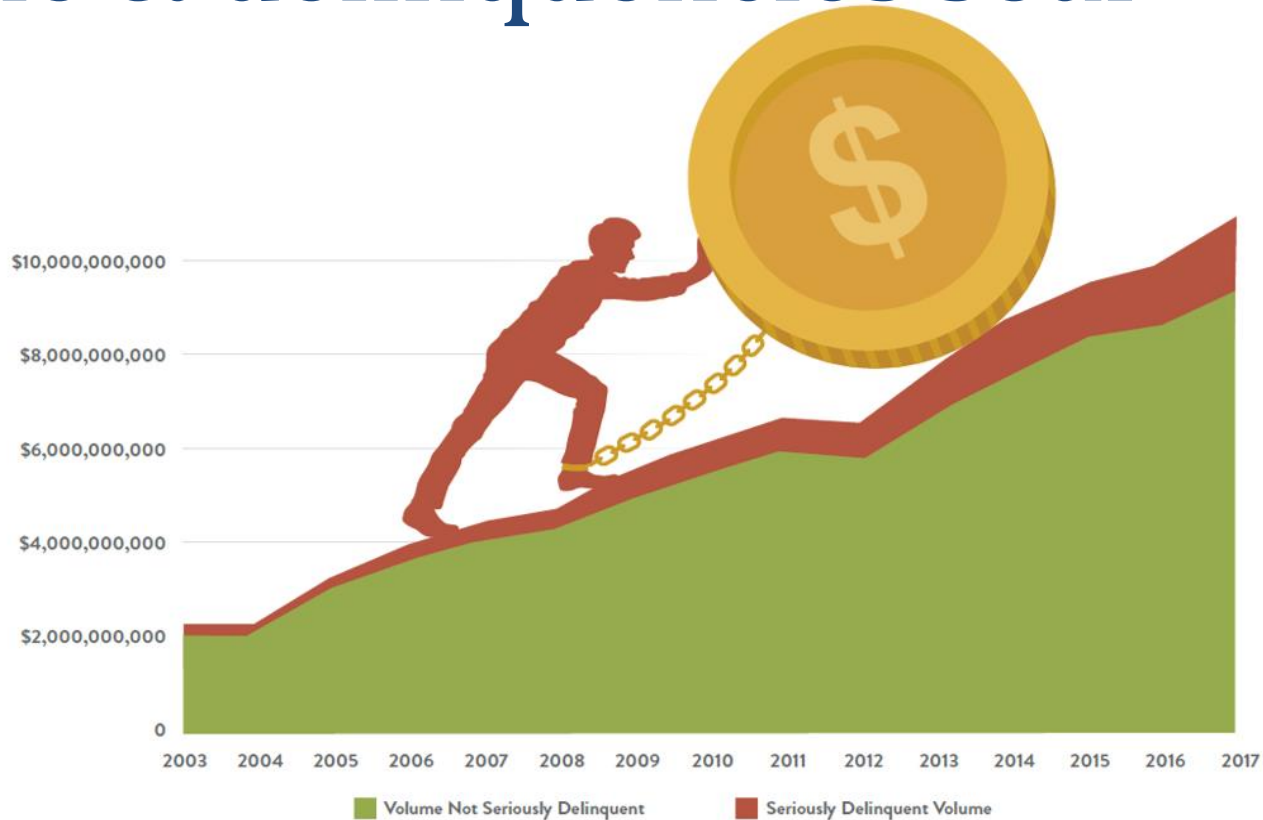
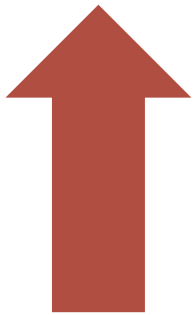
Source: Dallas Economic Opportunity Assessment, CPPP, April 2018





# Increases in student loan volume & delinquencies soar

380%



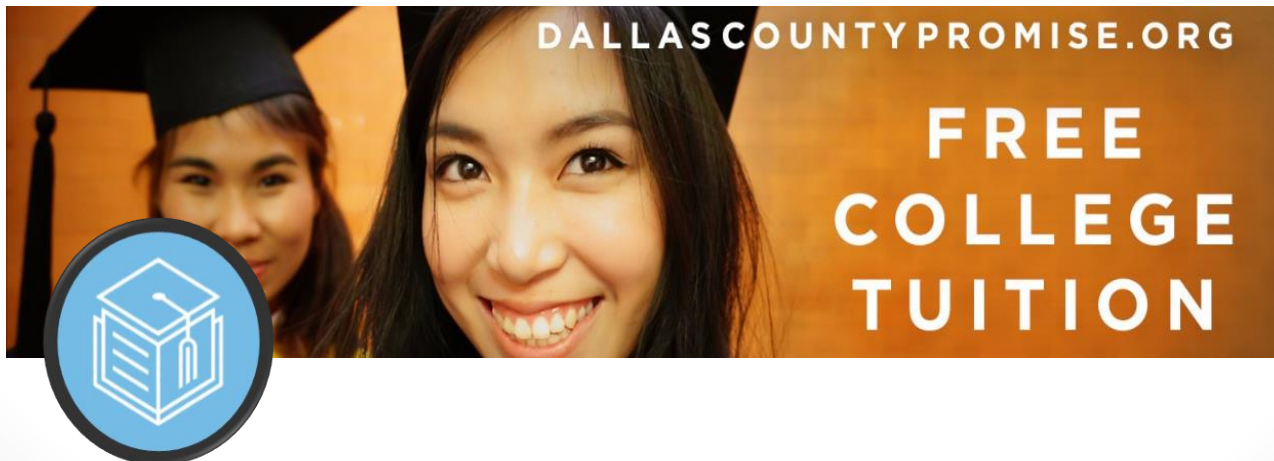
Source: Dallas Economic Opportunity Assessment, CPPP, April 2018



# Dallas County Promise Free College for All!



- Dallas County Promise is a transformational effort between school districts, colleges, universities, workforce, and communities to increase college completion.
- Timely completion of FAFSA guarantees free community college tuition for Dallas County high school graduates
- Provides mentoring from 12<sup>th</sup> grade through college completion
- Tracks student success throughout program



# Dallas County Promise Debt-Free College



- More than 4,000 Dallas County students are enrolled in Dallas County Promise campaign.
- New Dallas County Promise Schools
  - Duncanville HS
  - Singley Academy
  - MacArthur HS
  - Newman Smith HS
  - R.L. Turner HS
  - John Dubiski Career HS
  - North Garland HS
  - South Garland HS
  - Skyline HS
  - Woodrow Wilson HS
  - Richardson HS Berkner HS



# Dallas County Collegiate Academies

Each of the colleges of DCCCD offers a number of programs designed to help high school students get on the fast track to a college education, including Dual Credit, Collegiate Academies, and Early College High Schools. The following districts have partnerships with DCCCD:

- **Carrollton-Farmers ISD**
- **Cedar Hill ISD**
- **Dallas ISD**
- **DeSoto ISD**
- **Duncanville ISD**
- **Garland ISD**
- **Grand Prairie ISD**
- **Lancaster ISD**



Dallas County  
Community College District





# Pre-K emphasis

Pre-K Today. Professionals Tomorrow.

Don't wait! Register your child for Dallas ISD Pre-K now.

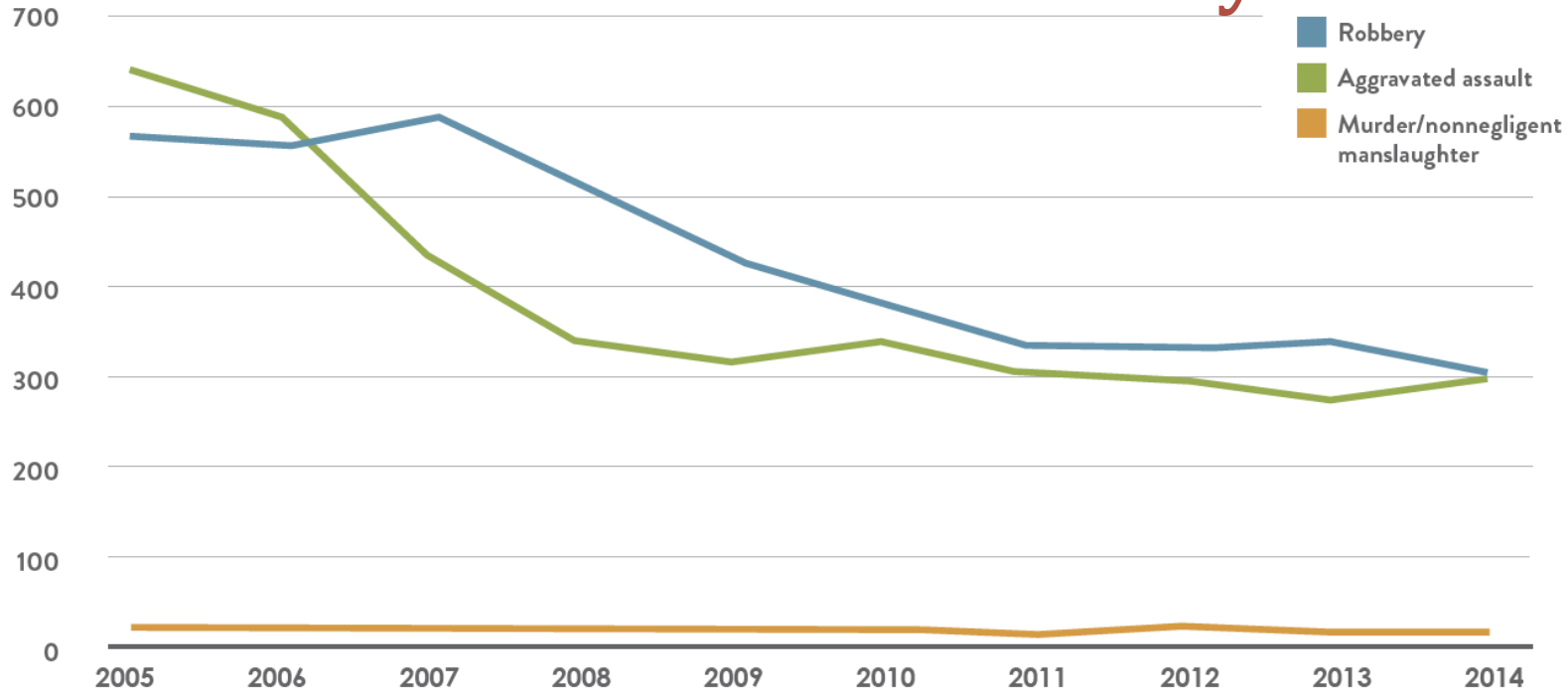


- Nine local districts collaborated with Early Matters Dallas on Prek registration week
- DISD has a record 13,000 students registered for Fall 2018
- Drastically increases Kindergarten readiness by **350%**
- More likely to succeed in school and go to college
- Less likely to drop out
- Less likely to become a teen parent
- Less likely to be arrested for a violent crime





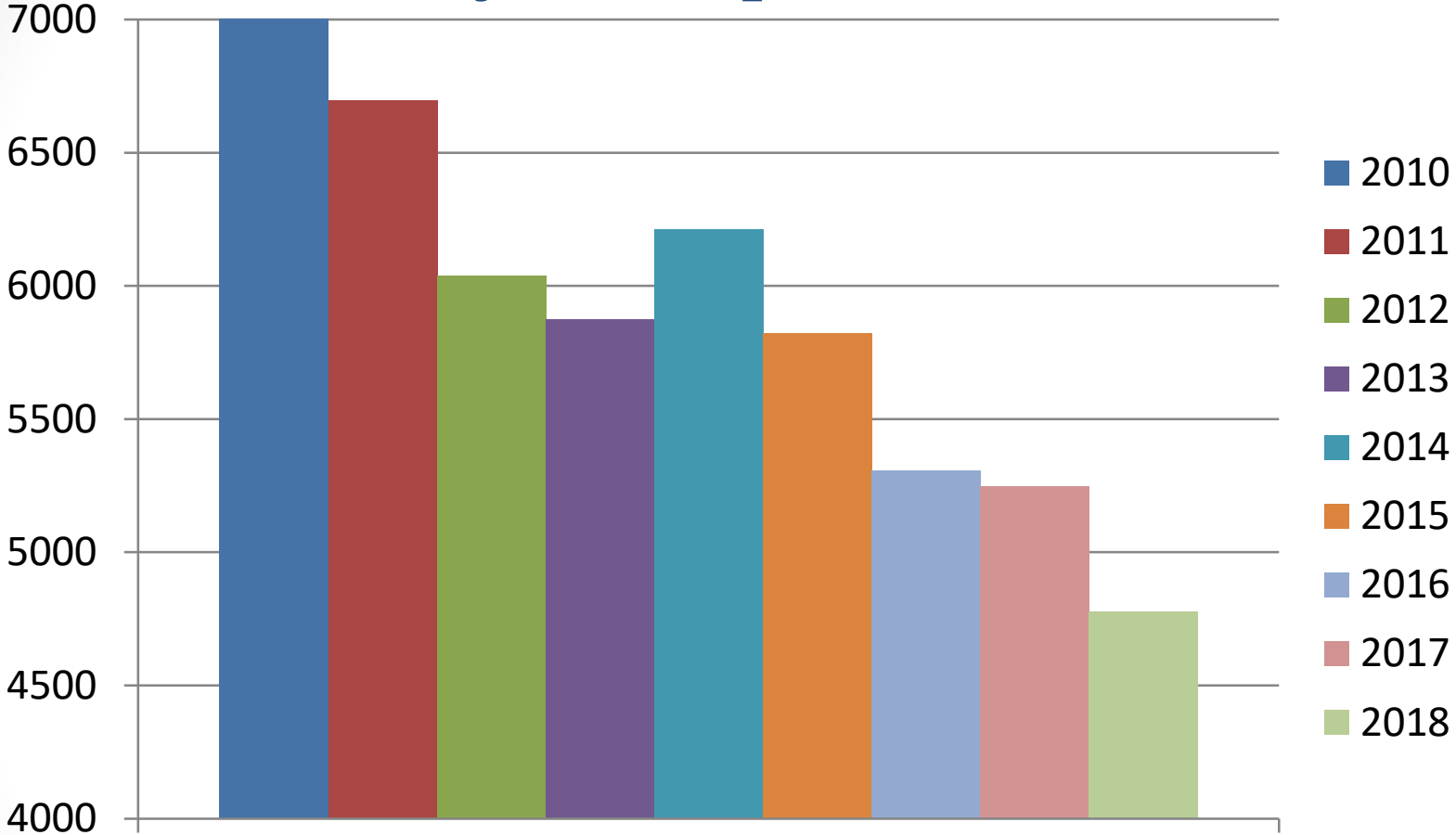
# Good News: Violent crimes in Dallas decline dramatically



Source: Dallas Economic Opportunity Assessment, CPPP, April 2018



# Dallas County Jail Population since 2010



Number of Inmates in April each year



# Criminal Justice Reform

- Vicious cycle of poverty, criminality, and incarceration weakens too many communities
- America has 2.2 million people in prison today
- In 1986, there were 500,000
- America has less than five percent of the world's population but more than 25 percent of the world's prisoners
- We spend \$80 billion annually in America on prisons
- It is time to enact sweeping bipartisan criminal justice reform at all levels



# Bail Reform



- ▶ Dallas County Jail Population: 4,724 (*was 5,332 during SOTC last year*)
- ▶ Dallas County Pre-Trial Jail Population: 3,819 (71%)
- ▶ Average daily cost to taxpayers to incarcerate one person: \$55.36
- ▶ 26,184 people in Dallas County on probation
  - ▶ Average daily cost to taxpayers for one person on probation: \$3.20

Source: Texas Criminal Justice Coalition, Dallas County Adult Criminal Justice Data Sheet, 2016





# Fair Chance Act

- The Fair Chance Business Pledge is a nationwide call-to-action to accomplish the shared goal of creating a stronger set of opportunities for people who have been impacted by the criminal justice system.



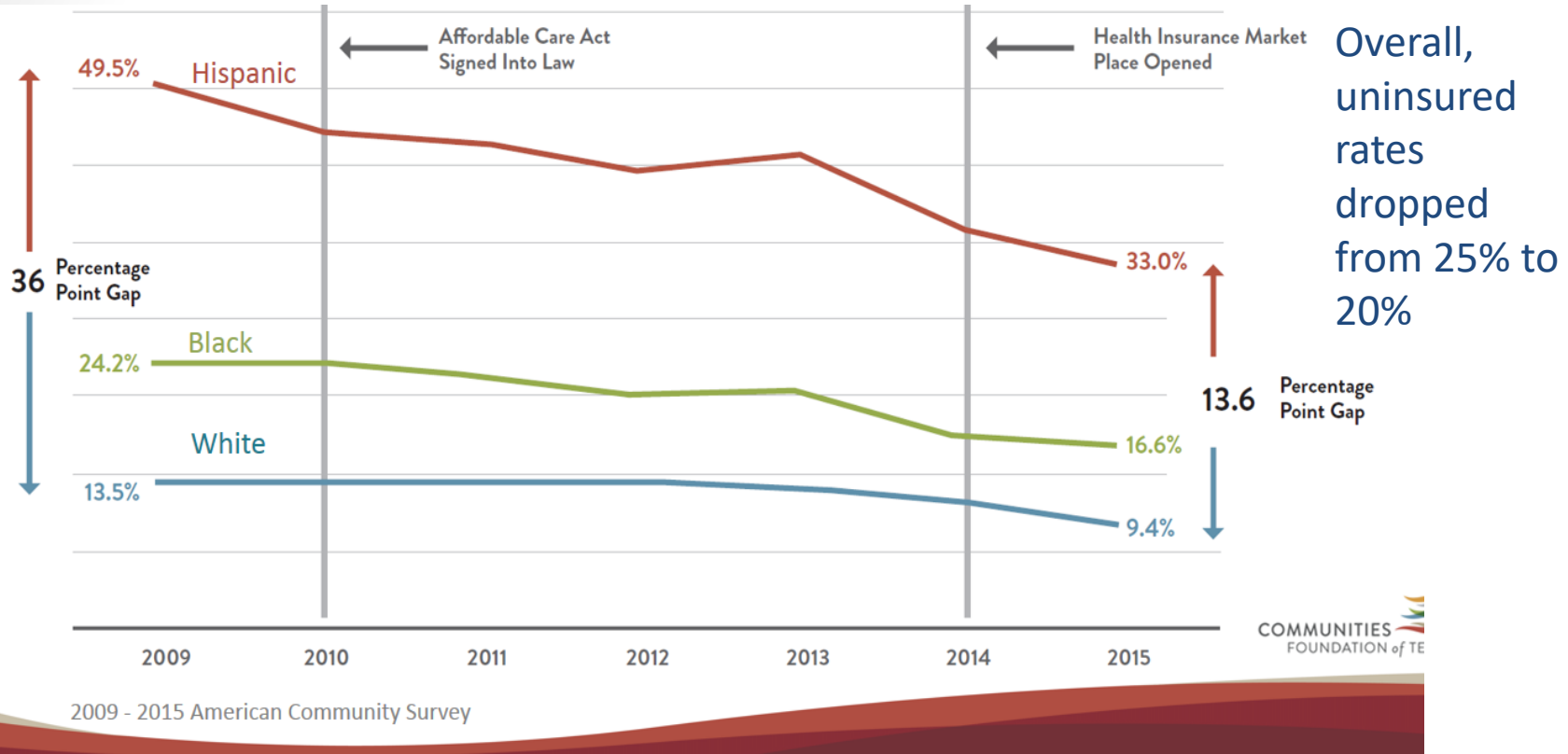


# Fair Chance Act

- **Promote Fair Chance Hiring Practices**
  - Banning the Box
  - Train Human Resources Staff on Making Fair Decisions
  - Provide Internships and Job Training to those with Criminal Records
  - Use Reliable Background Check Providers
  - Host a Fair Chance and Opportunity Job Fair
- **Take Action in Your Local Community**
  - Supply Tools for Success: business clothing, cell phones, internet service, transit cards, or child care services
  - Provide Mentors to Children of incarcerated parents
  - Offer Support to Regional Reentry Facilities



# Good News: Uninsured Rates Falling in Dallas County



Source: Dallas Economic Opportunity Assessment, CPPP, April 2018



# Health Insurance

**Despite significant threats to Open Enrollment efforts, Enroll North Texas Coalition promoted and successfully assisted individuals to enroll in health insurance.**



## ACA Enrollment 2018

- Dallas County: 106,923
- Denton County: 26,997
- Collin County: 43,027
- Tarrant: 68, 649
- Texas: 1,126,838



# Healthcare Priorities

- **Protecting Public Health**
- **Promoting Access**
- **Increasing Coverage and Reducing the Number of Uninsured**
- **Maintaining a Strong Parkland Hospital**



# Coverage Gap Remains

- Dallas County loses an average of **\$580 million per year** by not expanding.
- Dallas County has upwards of **200,000 people** that would be eligible for coverage under Medicaid expansion
- For every \$1 a state invests in Medicaid expansion, \$13.41 in federal funds will flow into the state.
- Further threats to the ACA will drive up health insurance costs and create an even larger gap.

Sources: Urban Institute, CPPP, HHSC





# High Cost, Inefficient Care

When people don't have health insurance, they are forced to seek care in the emergency room.

Uncompensated Care at Parkland 2017:  
**\$879,700,000**

Tax Revenue 2017:  
**\$575,745,000**



# Dallas County Preparation

*“Failing to plan is planning to fail”*

## Always Planning....


- Off Airport Airplane Crash
- Hazardous Materials Train Derailment
- County Highway Radiological Spill
- Urban Shield Regional Active Shooter/Terrorism Exercise
- Rio Grand Valley Hurricane Evacuation to Dallas County
- Annual Severe Winter Weather Exercise
- Annual Flash Flood and Tornado Exercise
- Mass Casualty Exercise



# Recent Dallas County Emergency Responses

<b>Feb/March 2018</b>	Natural Gas Leaks in Dallas
<b>July 2016</b>	Downtown Dallas police ambush
<b>June 2016</b>	Flash floods
<b>Dec. 2015</b>	Tornadoes in DeSoto, Garland, Glenn Heights, and Rowlett
<b>May 2015</b>	Flooding, record rainfall
<b>Fall 2014</b>	Ebola
<b>Summer 2012</b>	West Nile Virus

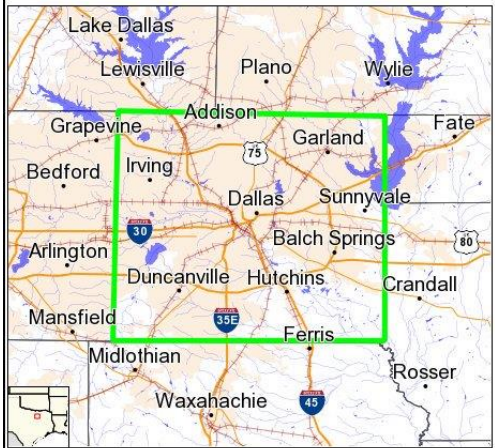




## Flash Flood Warning

@NWSFortWorth

Valid until June 2nd, 2016 at 5:30 PM CDT



Affected Population: 2,550,768	Miles of interstate: 153
Public Schools: 692	Airports: 6
Area: 899 square miles	Miles of railroad: 317
Hospitals: 45	National Parks: 0

Created Thursday June 2nd, 2016 at 2:39 PM CDT



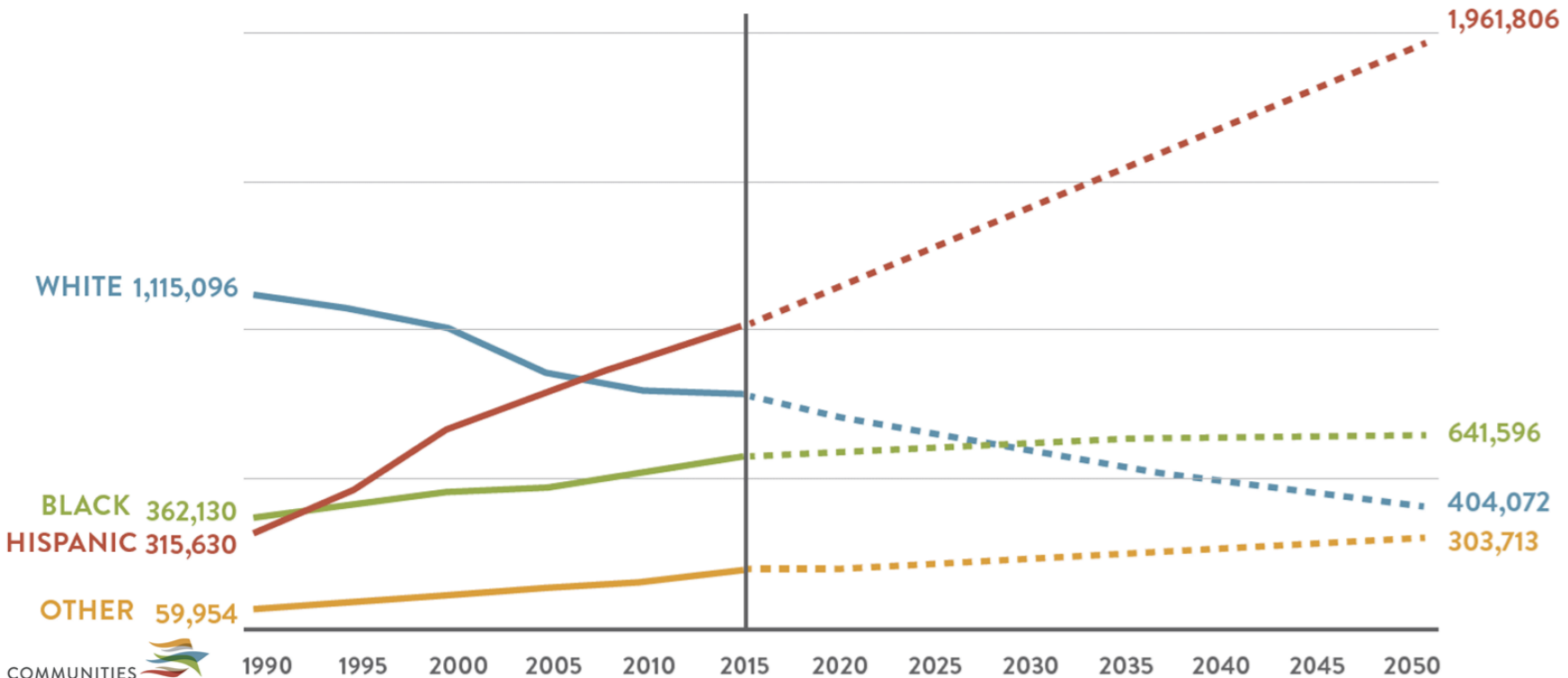
# Dallas County is Growing and Changing

2.5  
Million

2011 2012 2013 2014 2015 2016 2017 2018 2019



# Dallas County Population Change...Now and in the future



COMMUNITIES  
FOUNDATION of TEXAS

Texas Demographic Center, Population Estimates & Projections





**For economic security to thrive in Dallas,  
we can't forget about what's under the  
surface**





# Judge Clay Jenkins

---

## Dallas County



# Thank you

