



Baylor Scott & White HEALTH

**Get Better**

# What Determines Health

POPULATION HEALTH

By Sabine I. Vuik, Erik K. Mayer, and Ara Darzi

ANALYSIS & COMMENTARY

## Patient Segmentation Analysis Offers Significant Benefits For Integrated Care And Support

**ABSTRACT** Integrated care aims to organize care around the patient instead of the provider. It is therefore crucial to understand differences across patients and their needs can help divide a patient population into segments that can be targeted with care models and support. In this article we explore

ER WYMAN



AMID  
its with distinct needs



Findings prepared for the Blue Cross Blue Shield of Massachusetts Foundation by Yale Global Health Leadership Institute

Annals of Inte

### for Value-Based Frame Shift

Krisda H. Chalychati

More than 1500  
can Hospital A  
have begun imple  
nomic and racial di  
outcomes. Despite  
equity, evidence s  
value-based paym  
forts, unintentional  
by disadvantaging  
populations (1). B  
account for a moun  
will remain elusive  
what we measure

How can we n  
formance standards v  
the onus has fallen  
ments and penalti  
(2-4). This method  
current socioecon  
limitations: We can

we may not be measuring the right exposures. The  
Medicare data, a key driver of payment reform, in which  
socio-demographics are limited to race/ethnicity, dual e  
gibility for Medicaid and Medicare, and residency in rur  
or low-income areas. Although these measures are ofte  
good proxies for socioeconomic risk, others may bett  
explain between-population variations in health ou

## Stakeholder Health

Transforming Health Through Community Partnership

Stakeholder Health is a voluntary learning collaborative of some 50 plus participating health systems and invested institutions calling for operational transformations that will align with the profound changes occurring in *all* aspects in the provision of health care.

All of our organizations  
mercy, justice and equity  
ago when it was even ha  
day when the governmer  
“community benefit.” W  
committed to exceed any  
Participants see in the cu  
tunity to address the und  
communities by strategic  
working with diverse sta  
of services and investme  
and contribute to overall

PINIO

AGEMENT



The Commonwealth Fund

May 14, 2018

New ROI Calculator Assesses Risks and Rewards of Integrating Social Services

e-Alert



## Social Determinants Compound Systemic Barriers

Kaiser Family Foundation's Framework of the Social Determinants of Health



Health Outcomes

ie social determinants of health, especially for

@  
ilicy  
of  
lon,  
lon, in

nical  
Centre  
erial

chair of  
Summit  
ndation,  
stitute  
vation,  
lon,

# SDOH: Another Perspective..

These are *social needs* at an individual level and change over time



H



U



F



T



A



C



*“SDOH Impact Everyone; They Are Not Something An Individual Can Have Or Not Have, And They Are Not Positive Or Negative”*

- *Healthy People 2020*



# Equality

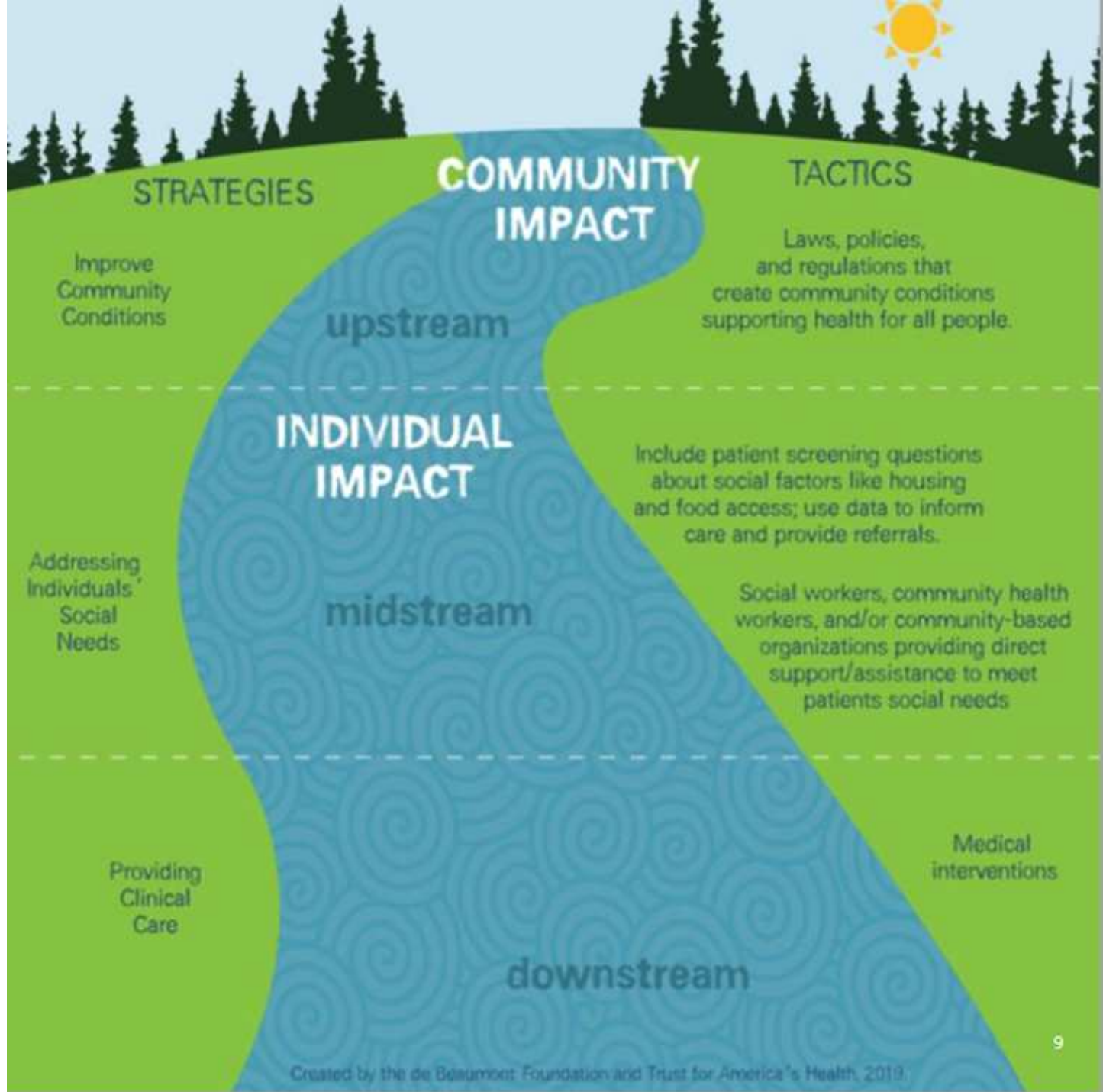


# Equity

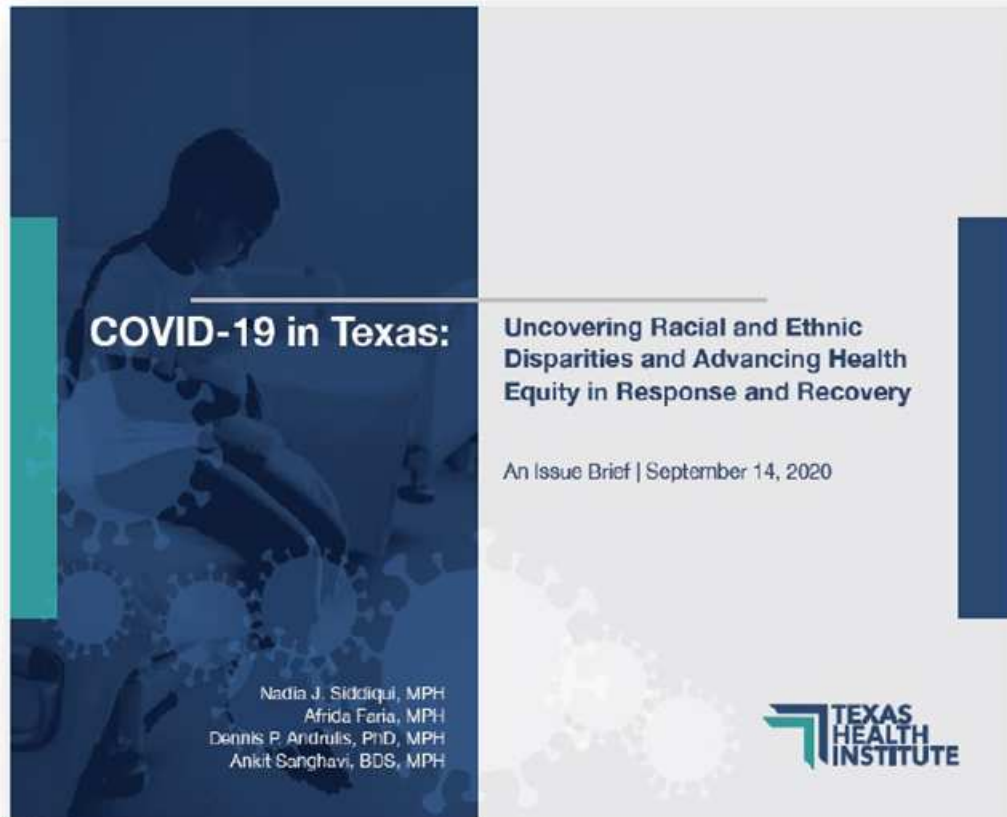


© 2017 Robert Wood Johnson Foundation.  
May be reproduced with attribution.

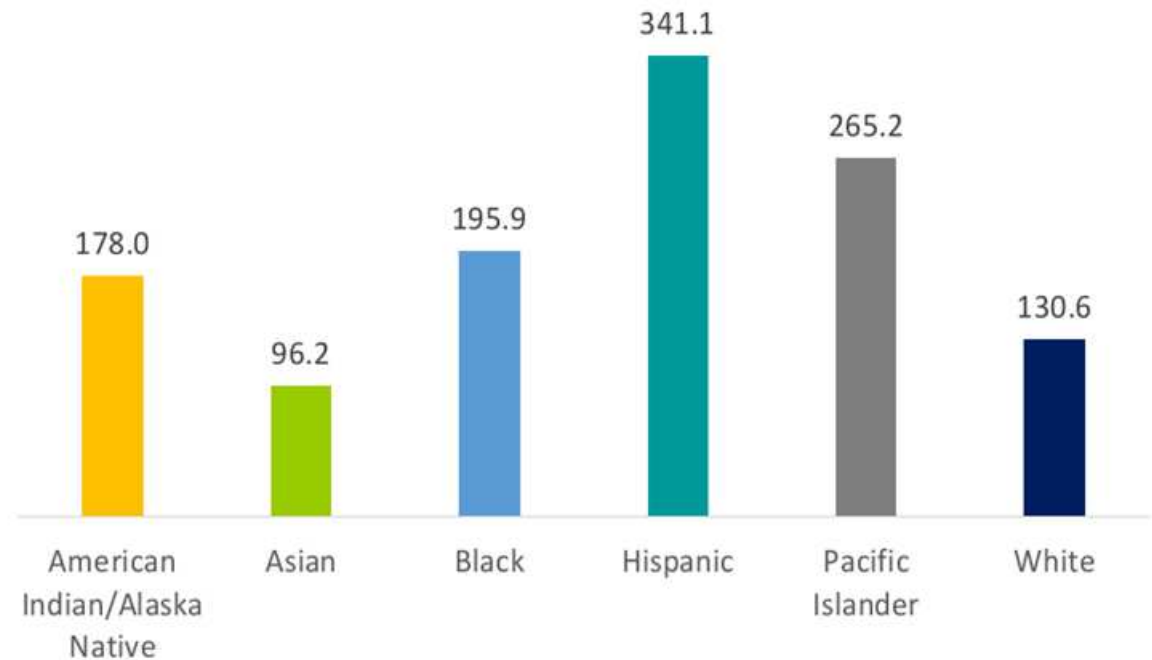
*We must move upstream to fundamentally improve whole person & community health*



# COVID-19 laid bare the **deep and persistent health inequities** in Texas



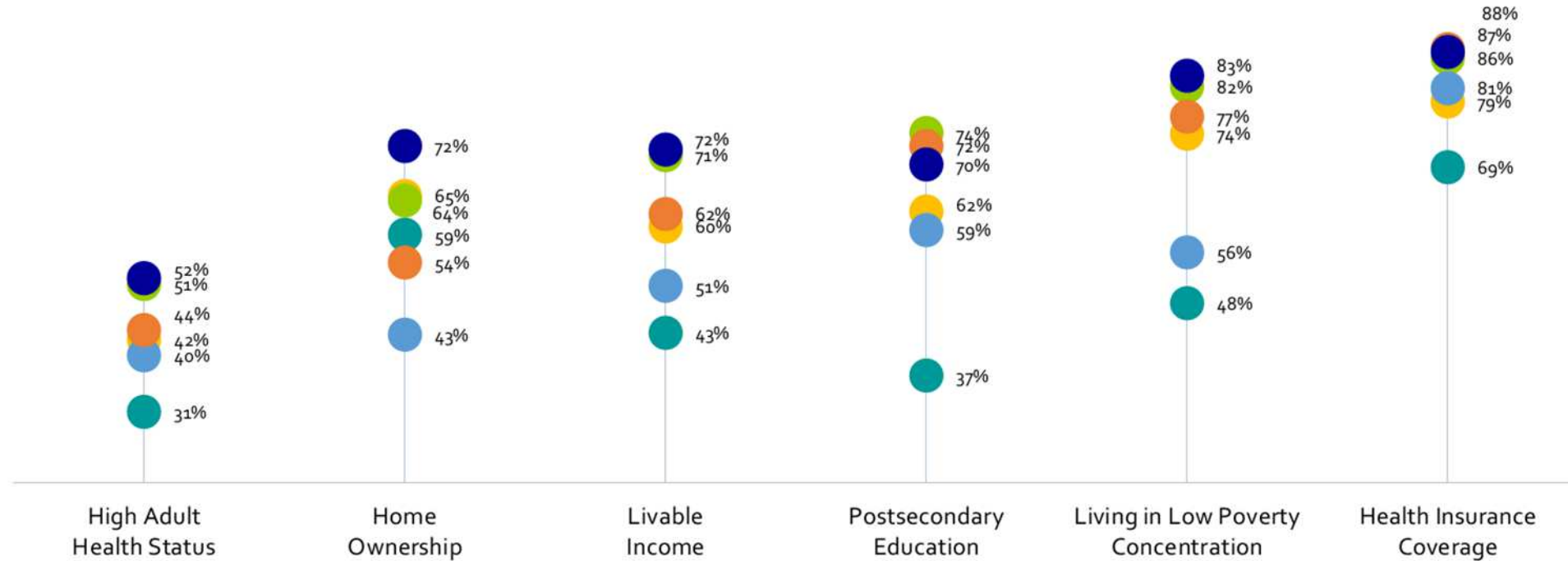
Age-Adjusted COVID-19 Deaths per 100,000 Population in Texas



Source: As of March 2, 2021 via APM Research Lab. <https://www.apmresearchlab.org/covid/deaths-by-race>  
Latino ethnicity is reported separately from non-Hispanic race groups in Texas. This data was obtained from the CDC, as it is more complete than Texas' public reporting via its website.



## These inequities reflect broader **systemic barriers to social, economic and health opportunities** faced by communities of color in Texas

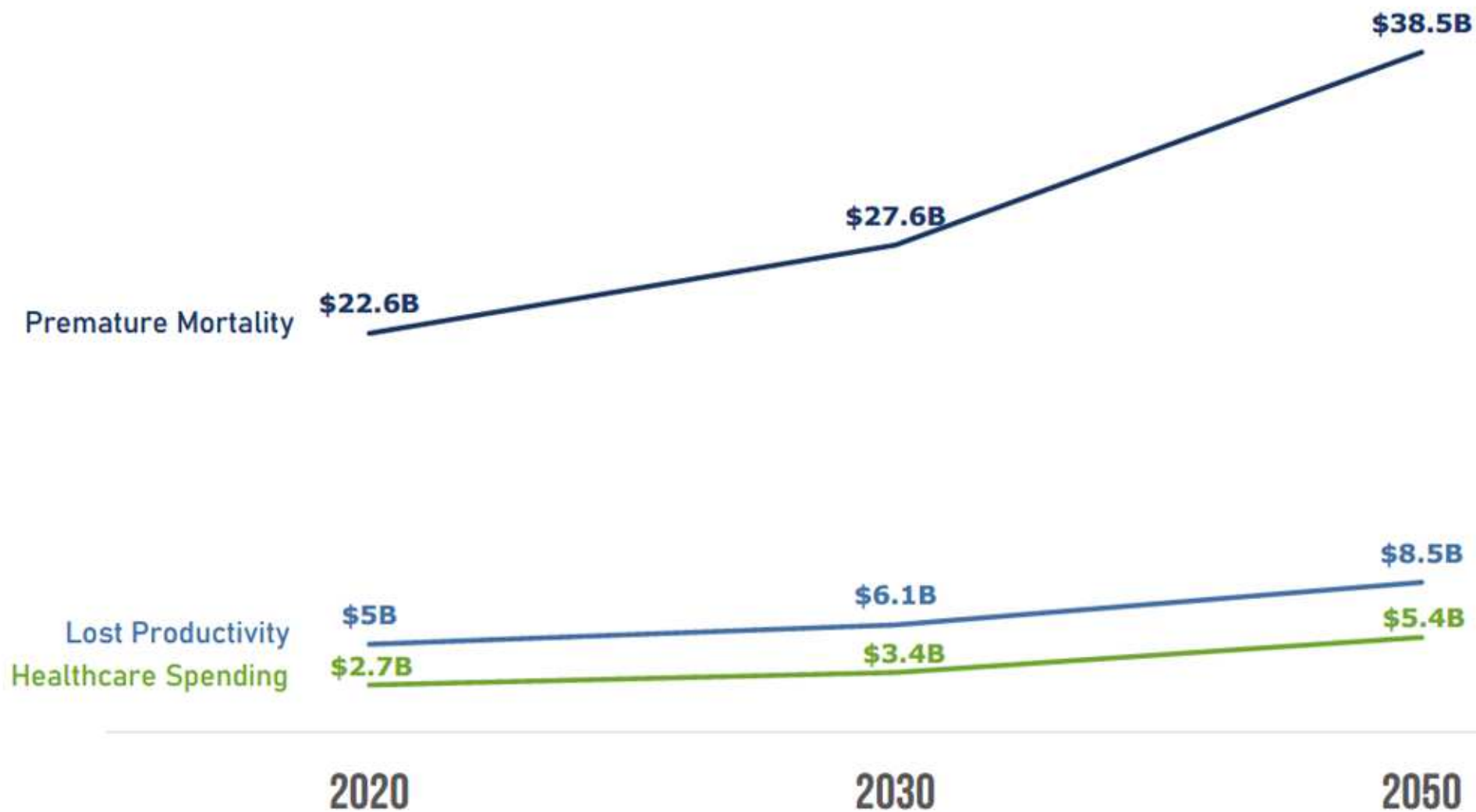


# Covid Impacts - Case Example





# Economic impacts of health disparities in Texas (annually)



# What can be done?

Privilege



## Listen

Stakeholder Input  
Data  
Education  
Root Causes

*Lean In*

Equitable  
Access

Power



## Align

Money  
Time  
Resources  
Carrots + Sticks  
“Have-to’s”

*Power in Numbers*

Joint  
Initiatives

Politics



## Contextualized Solutions

POC v. “Home”  
Urban v. Rural  
Now v. Later

*Meet us where we  
are*

Change the  
Narrative



## Impact

People  
Programs  
Processes  
Policy

*Break the Cycle*

Improve  
policy

# If Texas were to **achieve health equity**, millions of Texans would thrive



Achieving health equity involves more than just access to health care. How and where we live, work, and play determines many opportunities tied to overall well-being.

Source: The Health Opportunity and Equity Initiative, 2020

HOPE data show that if all individuals living in Texas had fair and just opportunities:



8.7 million more people would live in neighborhoods with low poverty



4.9 million more adults would live in households with a livable income



5.2 million more adults would achieve very good or excellent health



4.3 million more people would have food security

# In the new COVID reality...



**We must act courageously**

