



# **NORTH TEXAS TOLLWAY AUTHORITY**

---

**Elizabeth Mow, P.E.**  
**Assistant Executive Director of Infrastructure**  
December 16, 2022

The image features the Texas state flag, which consists of a blue field with a white five-pointed star, a white horizontal stripe, and a red horizontal stripe. A fountain pen nib is positioned on the red stripe. A white rectangular box with a torn top edge is overlaid on the bottom right of the flag.

NTTA was founded by the  
75<sup>th</sup> Texas Legislature in  
1997

**Chapter 366**  
**Texas Transportation Code**

**Happy 25<sup>th</sup> Birthday NTTA!**





# Your T lling Authority

- **Political subdivision of Texas**
- **Only build what region asks us to build**
- **Part of regional transportation network**
- **Safety and customer service**
- **Not funded by taxes**



**2** counties with  
NTTA toll roads

**4** counties with  
NTTA toll roads

**6** counties with  
NTTA toll roads

<b>Outstanding Debt</b>	\$1.1B	\$7.7B	\$9.5B
<b>Lane Miles</b>	124	744	1,194
<b>Transactions</b>	125M	587M	865M
<b>Active TollTags</b>	173,000	2.6M	6.4M



 **ROADSIDE ASSISTANCE**  
**CALL #999**

**Safety**

# Moving with the Speed of Texas

1

## Roadway Safety Services

- 24x7 free roadside services
- Dedicated police services
- Wrecker services

3

## Smart Detection

- Smart cameras
- Wrong way driver detection
- Accident review committee
- Incident mapping



2

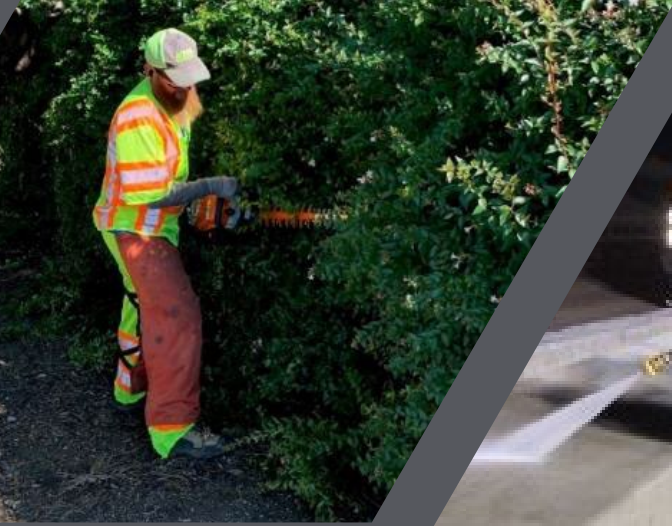
## Technology

- Safety Operations Center
- Microwave technology
- Speed sensors
- Lonestar

4

## Outreach

- Red Thumb
- Project communications
- TollMate
- RSS feedback program



# Maintaining Our Assets





# **FIVE-YEAR** CAPITAL PLAN

**KEY**

- ..... County lines
- Existing
- In Development
- Corridor Study

**DNT Extension**  
over US 380

**DNT 4B**  
FM 428 to  
Grayson County

**DNT Widening**  
SRT to 380

**DNT 4A**  
US 380 to FM 428

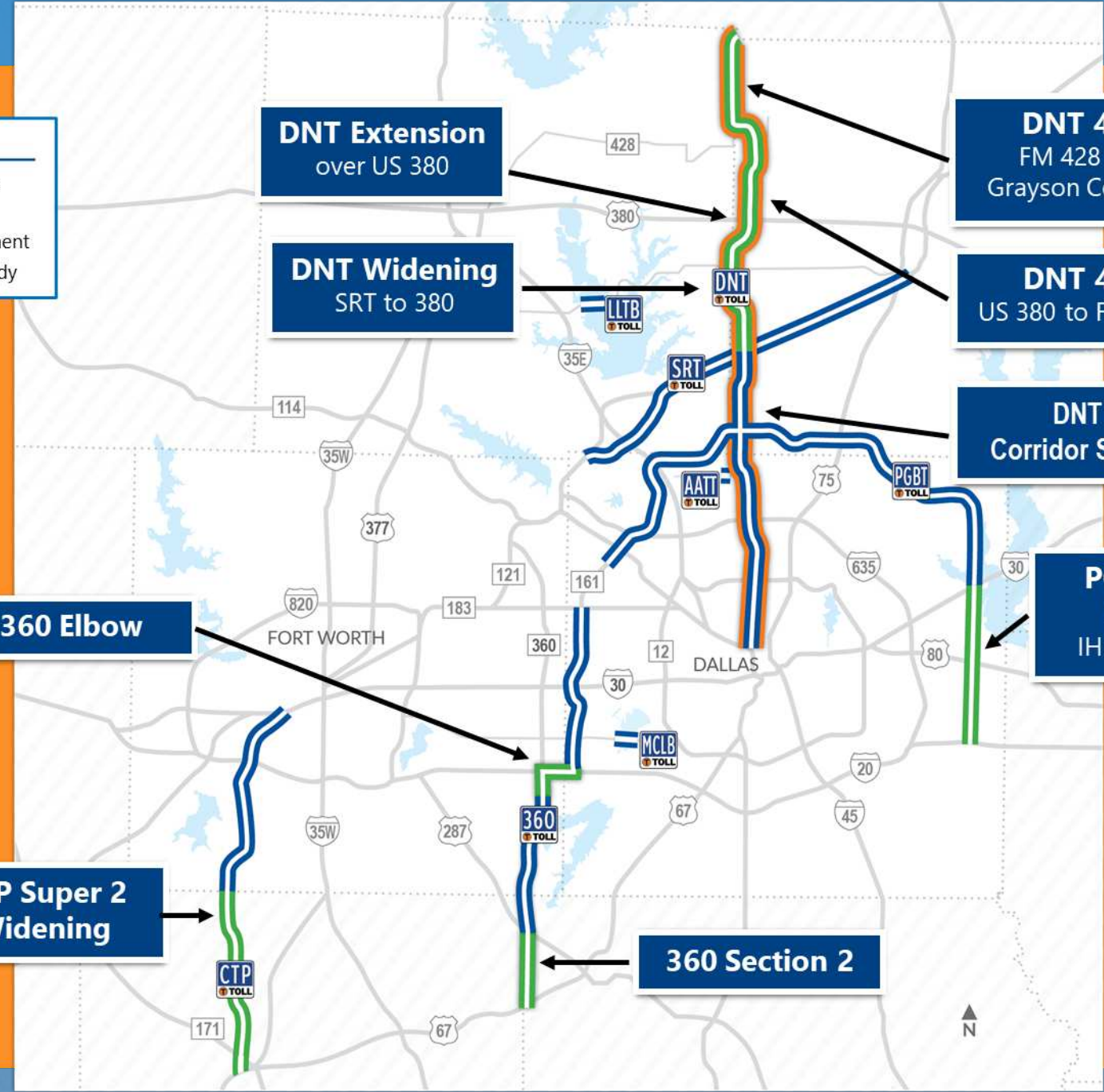
**DNT**  
Corridor Study

**360 Elbow**

**PGBT East Branch**  
IH 30 to IH 20

**CTP Super 2**  
Widening

**360 Section 2**





**DNT 4B  
Frontage Road**



**DNT  
OVER US 380**





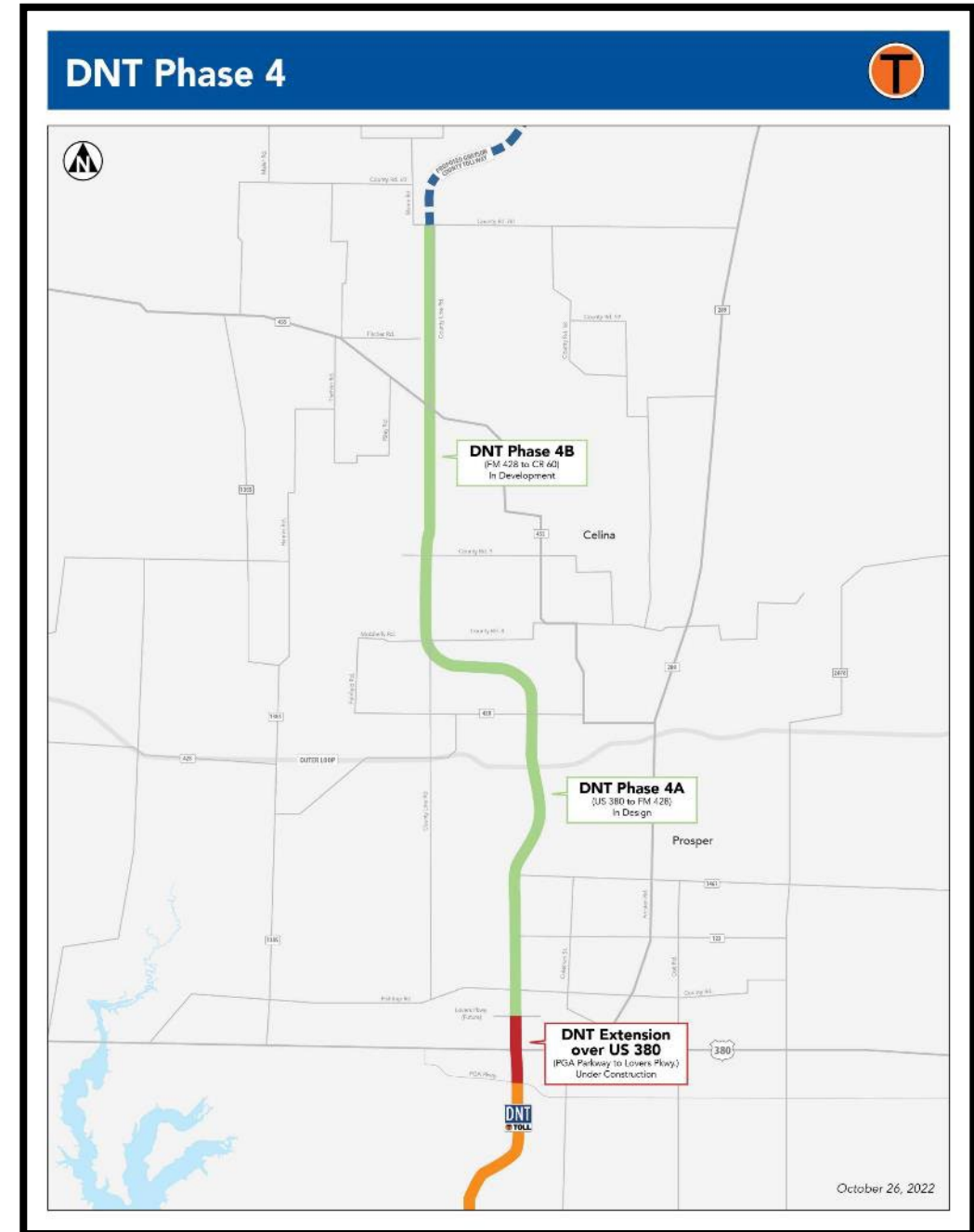
**DNT  
Widening  
SRT to US 380**





# Extension 4A

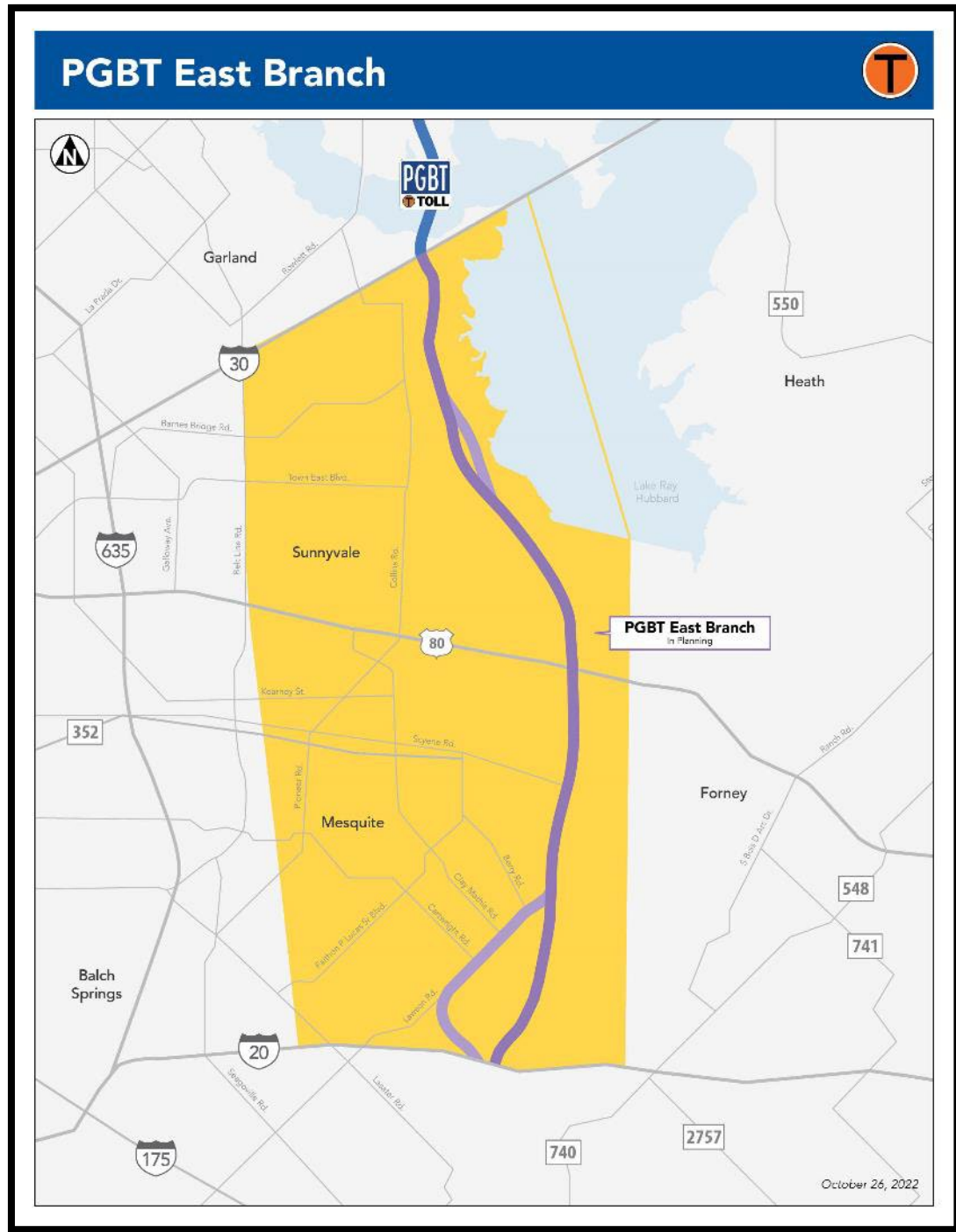
- 6 miles
- US 380 to FM 428, Collin County
- Both frontage roads in place
- Design underway, construction anticipated to start 2024





# PGBT East Branch

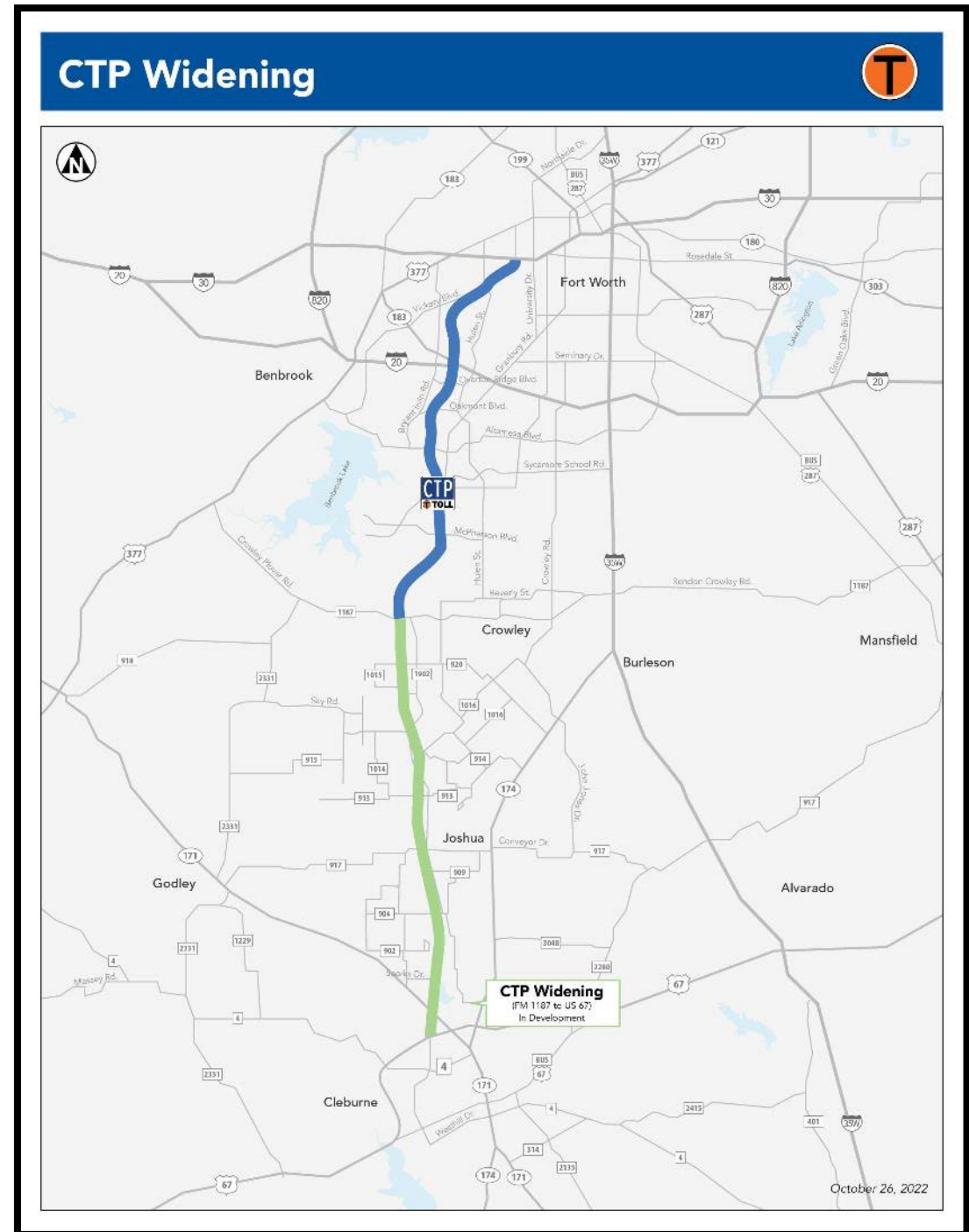
- 11.2 miles
- IH 30 to IH 20, Dallas County
- Planning underway, right-of-way and design anticipated to start 2025





# CTP Super 2 Widening

- 13 miles
- Two additional lanes to project
- FM 1187 to US 67, Johnson County
- Planning underway; design anticipated to start 2023

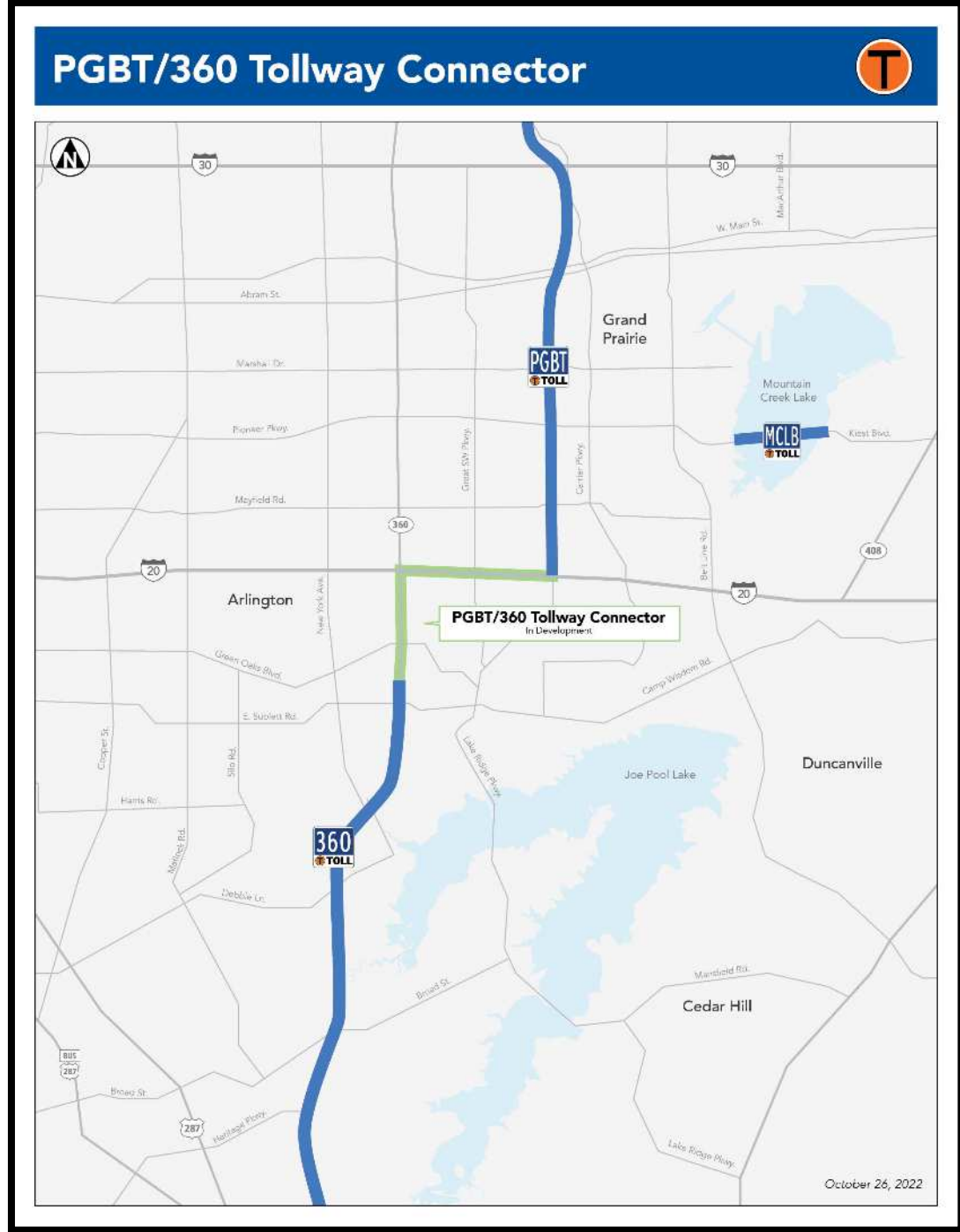






# 360 Elbow

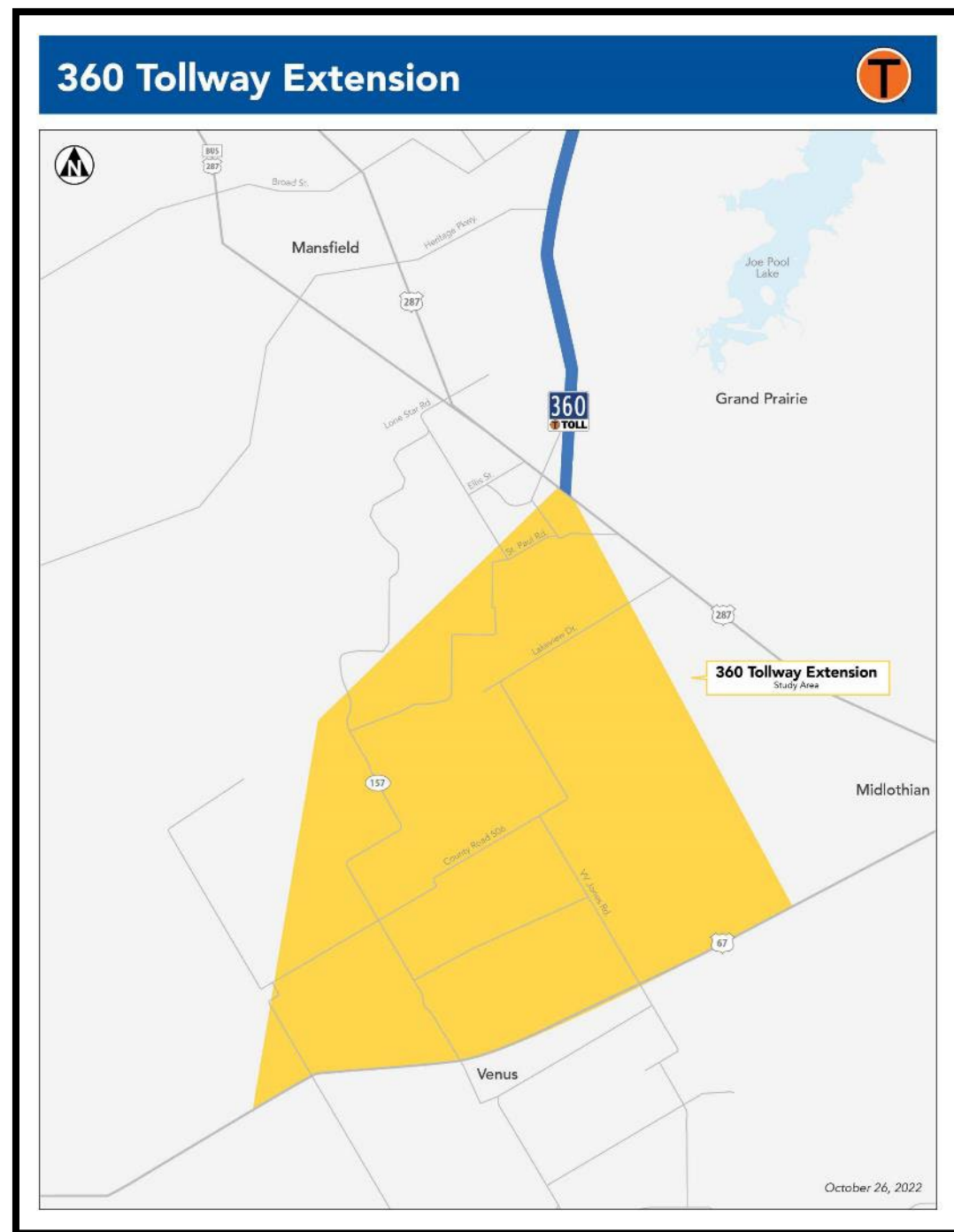
- 4.8 miles
- Connecting PGBT to 360 Tollway, Dallas and Tarrant County
- Planning anticipated start 2023





# 360 Tollway Segment 2

- **Approx. 6-mile corridor**
- **US 287 to US 67 in Johnson & Ellis counties**
- **Environmental impact statement process to determine alignment**
- **Planning anticipated to start 2023**



**KEY**

- ..... County lines
- Existing
- In Development
- Corridor Study

**DNT Extension**  
over US 380

**DNT 4B**  
FM 428 to  
Grayson County

**DNT Widening**  
SRT to 380

**DNT 4A**  
US 380 to FM 428

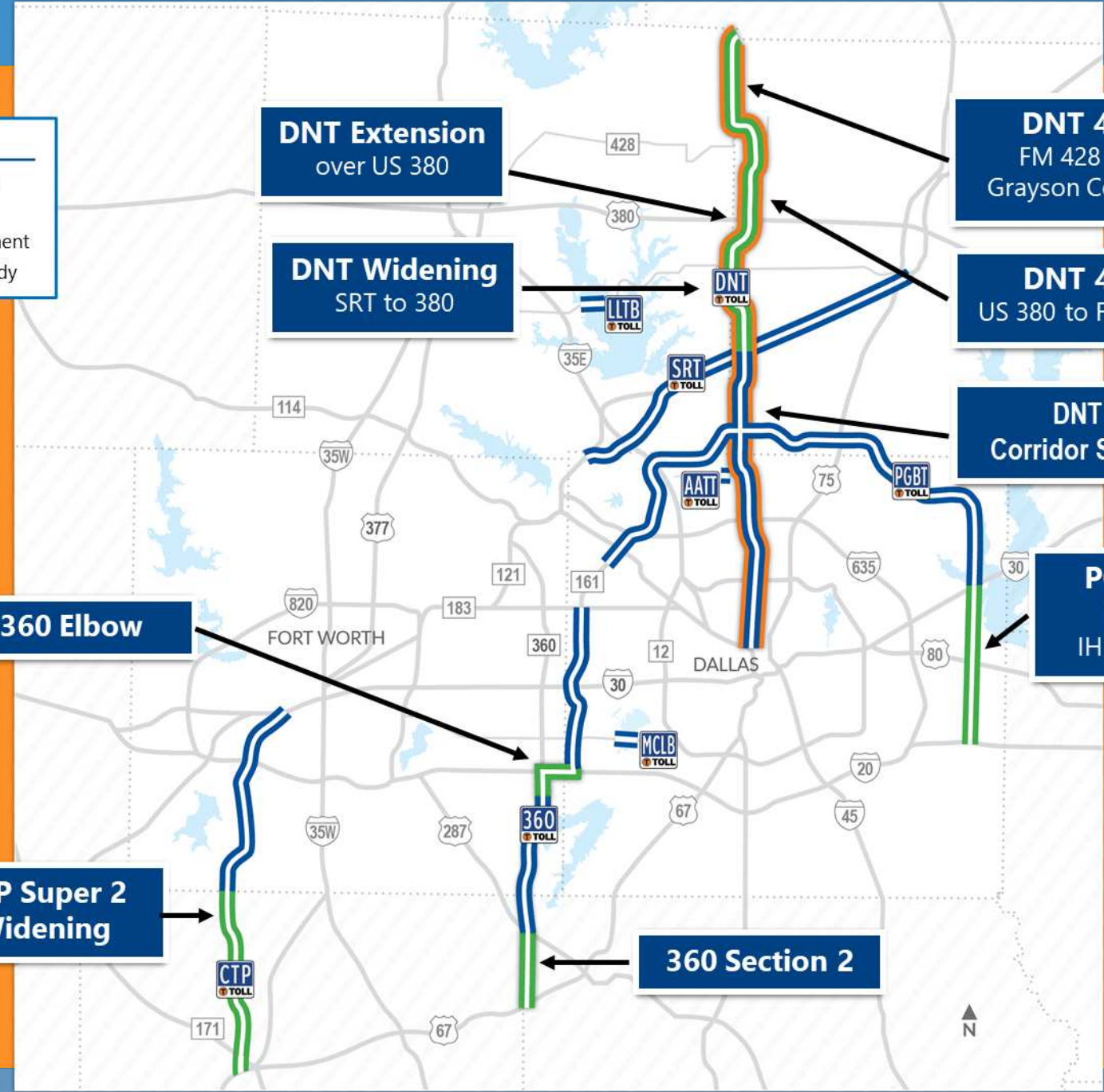
**DNT**  
Corridor Study

**360 Elbow**

**PGBT East Branch**  
IH 30 to IH 20

**CTP Super 2**  
Widening

**360 Section 2**



THANK YOU

**NTTA**